



## FIBER OUTSIDE PLANT

Sealed & Aerial Splice Closures | Fiber Demarcation | Fiber Enclosures

## Table of Contents

<b>LightGuard™ Sealed Fiber Optic Splice Closures</b> . . . . .	2	<b>LightLink™ Fiber Optic Splice Trays</b> . . . . .	30
Peel and Seal Grommet Systems™ for Sealed Fiber Optic Closures . . .	3	Splitter Trays . . . . .	34
LG-55 Sealed Fiber Optic Splice Closure . . . . .	4	<b>Fiber Storage Units</b> . . . . .	35
LG-55-SC Sealed Fiber Optic Splice Closure . . . . .	5	Fiber Storage Units for ADSS Fiber Optic Cable . . . . .	36
LG-150 Sealed Fiber Optic Splice Closure . . . . .	6	Drop Cable Storage Units (DCSU) for Fiber Optic Cable Drops . . . . .	37
LG-250 Sealed Fiber Optic Splice Closure . . . . .	7	<b>LightLink™ Fiber Enclosures and Pedestals</b>	
MuxGuard™ 250 Sealed Fiber Optic Splice Closure . . . . .	8	LL-400b Optical Splicing and Distribution Enclosure . . . . .	38
Thin Film Filter (TFF) Compact Series CWDM . . . . .	9	LL-400s Optical Splicing and Distribution Enclosure . . . . .	39
LG-350 Sealed Fiber Optic Splice Closure . . . . .	10	LL-470 Fiber Optic Demarcation . . . . .	40
LG-350-AC Drop Access Sealed Fiber Optic Splice Closure . . . . .	11	LL-500 Optical Splicing and Distribution Enclosure . . . . .	41
LG-350XL Sealed Fiber Optic Splice Closure . . . . .	12	LL-580-AT Optical Splicing and Distribution Enclosure . . . . .	42
LG-700 Sealed Fiber Optic Splice Closure . . . . .	13	LL-24 Pedestal . . . . .	44
Accessories — Sealed Closures . . . . .	14	Interchangeable Grommets for Fiber Optic Splice Closures and	
LLAS Terminal Adapters for Sealed Fiber Optic Splice Closures . . . . .	17	Fiber Enclosures . . . . .	25
<b>LightGuard™ Aerial Weathertight Fiber Optic Splice Closures</b> . .	18	Interchangeable Splice Trays for Fiber Optic Splice Closures and	
LG-410 Aerial Weathertight Fiber Optic Splice Closure . . . . .	19	Fiber Enclosures . . . . .	27
LG-420 Aerial Weathertight Fiber Optic Splice Closure . . . . .	20	<b>OptiNID™ Fiber Demarcation</b>	
LG-420 FTTx Aerial Weathertight Fiber Optic Splice Closure . . . . .	21	OPN-500 Optical Demarcation Closure . . . . .	45
LG-500 Aerial Weathertight Fiber Optic Splice Closure . . . . .	22	OPN-760-XL Optical Demarcation Closure . . . . .	46
LG-600 Aerial Weathertight Fiber Optic Splice Closure . . . . .	23	OPN-1224 Optical Demarcation Closure . . . . .	48
LG-600 FTTx Aerial Weathertight Fiber Optic Splice Closure . . . . .	24	FPB-201 Fiber Demarcation Box . . . . .	49
Interchangeable Grommets for Fiber Optic Splice Closures and		<b>OSP Cable Assemblies</b>	
Fiber Enclosures . . . . .	25	Loose Tube & Riser Rated Indoor/Outdoor Loose Tube Cable Assemblies . .	50
Interchangeable Splice Trays for Fiber Optic Splice Closures and		Node Cable Assemblies . . . . .	52
Fiber Enclosures . . . . .	27		
Accessories — Aerial Closures . . . . .	28		



### LightGuard™ Sealed Fiber Optic Splice Closures

The AFL family of Sealed Fiber Optic Splice Closures is designed to simplify splice management. Quality engineering reduces the installation time, training and complexity associated with fiber splicing in the field. No heat, adhesives, drills or powered equipment for installation or re-entry are required. These durable, easy-to-install closures will increase productivity, reduce labor expenses and last the life of your plant.

#### Features

- Supports stranded loose tube, Uniflex® or ribbon fiber cables in either armored or dielectric configurations
- Installation and re-entry using common hand tools
- Fully sealed to protect fiber and splices ensuring longevity
- Fully kitted with all parts to install cables
- Designed and tested to Telcordia® GR-771 requirements
- Rural Utilities Service (RUS) Listed

#### Specifications

DESCRIPTION	MODEL					
	LG-55-U-0	LG-150-U-0	LG-250-U-0	LG-350-U-0	350-AC	LG-350XL-U-0
Splice Capacity (Max.) - Single, Mass, Mechanical	24, n/a, n/a	48, 144, 24	96, 288, 36 <sup>1</sup>	384, 1152, 108 <sup>2</sup>	144, 288, 36	864, 2592, 288
Number of Splice Trays (Max.) - Single, Mass, Mechanical	1, n/a, n/a	4, 3, n/a	4, 2, 3	12, 8, 8	4, 3	9, 9, n/a
Cable Entrance Configuration	In-line / Butt	Butt	Butt	Butt	Butt	Butt
Cable Ports	2	5	5	5	2 (Express Grommets) 3 (4-Drop Grommets)	5 (7 using dual port grommet Express sides)
Cable Sizes (Max. O.D.)	2 @ 0.60" (splice) 2 @ 0.77" (ground / bond)	5 @ 0.62"	5 @ 0.62"	3 @ 0.80" 2 @ 1.00"	2 @ 1.0" 12 @ 0.312" Flat or 0.250" Round	3 @ 1.25" 2 @ 1.35"
Testing						
- Cable Retention (100 lbs)	Passed	Passed	Passed	Passed	Passed	Passed
- Water Resistance (waterhead)	20 ft.	20 ft.	20 ft.	20 ft.	20 ft.	20 ft.
- Impact Resistance (0-40 °C)	Passed	Passed	Passed	Passed	Passed	Passed
- Chemical Resistance	Passed	Passed	Passed	Passed	Passed	Passed
- Cable Flexing	Passed	Passed	Passed	Passed	Passed	Passed
Dimensions - (L x D) in. (cm)	14.00 x 4.00 (35.60 x 10.16)	18.25 x 8.75 (46.36 x 22.23)	19.00 x 8.75 (48.26 x 22.23)	28.00 x 10.00 (71.12 x 25.40)	20 x 10	31.00 x 12.00 (78.74 x 30.48)
Weight - lbs. (kg)	3.0 (1.36)	10.5 (4.76)	11.5 (5.23)	14 (6.35)	13 (5.89)	25 (11.34)

NOTES: 1. For the LG-250-U-0; 36 mechanical splices only using the LL-2448 splice tray.  
2. For the LG-350-U-0; 108 mechanical splices only using the LL-2448 splice tray.

Telcordia is a registered trademark of Telcordia Technologies, Inc.



*Expandable to support various cable diameters*



*Ease of installation (no tapes, washers, or glue)*



*Multiple layers of sealing protection*

## LightGuard™ Peel and Seal Grommet Systems™ for Sealed Fiber Optic Closures

AFL's cable sealing grommet technology for the LightGuard (LG) Sealed Fiber Optic Closures improves sealing technology utilizing MULTICENTRIC® Grommets that do away with time consuming tasks such as installing washers and messy sealing tapes for cable entry. MULTICENTRIC® Grommets are designed to accept a wide range of cable diameters, eliminating the need to stock a variety of diameter-specific grommet kits.

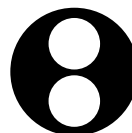
Conversion kits for old LG-100, LG-200, and LG-300 closures allows for "Peel and Seal" grommet technology to be used without changing out the existing closure.

### Features

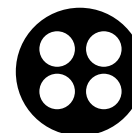
- All Peel and Seal Grommet Systems support loose tube, core tube, dielectric and armored cable designs
- Installation and re-entry using common hand tools
- Accepts a wide range of cable diameters
- Fast and easy to install
- Fits existing AFL LightGuard sealed closures
- Fully sealed to protect fiber and splices ensuring longevity
- Full conversion kits and dual cable entry port kits
- Designed and tested to Telcordia® GR-771 & RUS 515 closure requirements



**Single**



**Dual**



**Quad**

### Ordering information

#### SEALED CLOSURE FULL CONVERSION KITS (SINGLE AXIS CABLE ENTRY)

DESCRIPTION	AFL NO.
3 Port Drop Grommet (LG-150/250)	FC000655
Dual Express Grommets for LG-350	FC000337
Quad Express Grommets for LG-350	FC000421
Single Cable Grommet Kit, Drop Port	FC000628
4 Port Drop Grommet (LG-350 / LG-350-AC)	FC000422
LG-350 Express Single Cable Grommet Kit	FC000726
LG-350 Drop Single Cable Grommet Kit	FC000727



## LightGuard™ 55 Sealed Fiber Optic Splice Closure

Designed with versatility in mind, the LightGuard (LG) 55 sealed closure from AFL offers a variety of solutions including repair and distribution splicing, grounding for Fiber-in-the-Loop applications, and for use as an isolation gap with armored cables. This closure accepts stranded loose tube, Uniflex® or ribbon fiber cables in either armored or dielectric configurations and can be utilized in a butt or in-line configuration.

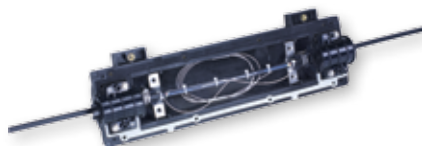
The LG-55 closure incorporates a unique cable clamp design sealing the cable, allowing both of the cover halves to be removed without disturbing the contents. In addition, AFL's Peel & Seal Grommet System™ is incorporated to ensure a tight fit on various cable diameters, fully sealing the closure and protecting the fiber while eliminating cumbersome tape and washers – making installation fast and easy.

### Specifications

PARAMETER	VALUE
Splice Capacity (Max.) – Single, Mass, Mechanical	24, n/a, n/a
Number of Splice Trays (Max.) – Single, Mass, Mechanical	1, n/a, n/a
Cable Entrance Configuration	In-line / Butt
Cable Ports	2 (3 using dual cable entry port kit)
Cable Sizes (Max. O.D.)	2 @ 0.60" (for in-line splice configuration) 2 @ 0.77" (for in-line ground / bond configuration) 2 @ 0.45" (for butt splice configuration)
Dimensions – (L x D) in. (cm)	14 x 4 (34.30 x 10.16)
Weight – lbs. (kg)	3.0 (1.36)

### Features

- Accommodates cables to 0.77" O.D. for splicing and grounding / bonding
- Incorporates the Peel & Seal Grommet System, fully sealing the closure
- Includes removable, integral central splicing module and individual cable retention clamps



*Inline Repair Closure (IRC) for repair of flat or round drop cables*

### Ordering Information

DESCRIPTION	MODEL NO.	AFL NO.
LG-55 Sealed Fiber Optic Splice Closure – 24 fusion splice capable and includes (2) cable kits for sealing / retention, (2) Cable Grounding Kits, (1) Dual Cable Entry Port Kit and a grounding terminal. Splice tray not included.	LG-55-U-0	FC000034-PS
LG-55 In-line Repair Closure	LG-55-IRC	FC000793-PS
LG-55 with Stainless Steel Hardware for Harsh Environments	LG-55-U-SS	FC000711
LG-55 Splice Tray – Stores 24 single fusion splices and includes base, cover, (3) eight-position splice holders and tie-wraps. Maximum of (1) tray in the LG-55.	LL-2425	FC000247
Dual Cable Entry Port Kit – Allows two cables to enter closure from each cable port. Includes one dual port cable grommet to increase the closure to four ports.	Dual Cable Entry Port Kit	FC000337
Cable Grounding Kit – Includes harness and hose clamp (one kit required per cable entry)	CGH-1	FC000003
Cable Grounding Harness Kit – Includes (4) 8" long ground harnesses constructed of #6 AWG conductor.	CGH-4	FC000024



## LightGuard™ 55-SC Sealed Fiber Optic Splice Closure

AFL's LightGuard (LG) 55-SC sealed closure retains all the features of the LG-55, but includes a unique patching system that utilizes pre-terminated SC fiber assemblies or field installable connectors such as the FAST™ SC.

An innovative solution that can be used to facilitate a link between traffic control cabinets and entrance cables, the LG-55-SC closure allows for rapid restoration and minimal damage to a fiber optic cable should an impact disable the cabinet. A breakable tie wrap secures the pre-connectorized cable to one side of the closure (traffic control cabinet), while the main entrance cable is secured with a more rugged cable clamp, allowing the system to separate during a damaging impact.

### Features

- Durable cover assembly that provides protection for all internal components and acts as an interface / anchor to the cable clamps
- Unique cable clamp seal to anchor the cable to the cover assembly
- Movable sheath retention bracket keeps cable bends at a minimum
- Accommodates up to four SC/UPC connectors
- Utilizes AFL's Peel & Seal Grommet System™, ensuring a tight fit on various cable diameters while eliminating cumbersome tape and washers

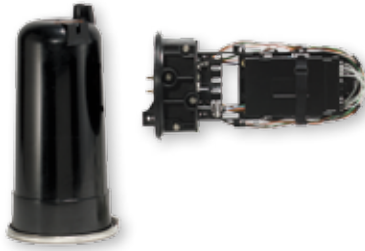
### Specifications

PARAMETER	VALUE
Maximum Cable Diameter	0.65"
Minimum Cable Diameter	0.30"
Maximum Cable Entry	2 ports (one each end)
Overall Dimensions	14" Length x 4" Diameter

### Ordering Information

MODEL NO.	AFL NO.
LG-55-SC	FC000481-PS
Dual Cable Entry Port Kit – Allows two cables to enter closure from each cable port. Includes one dual port cable grommet to increase the closure to four ports.	FC000337
Cable Grounding Kit – Includes harness and hose clamp (one kit required per cable entry).	FC000003
Cable Grounding Harness Kit – Includes (4) 8" long ground harnesses constructed of #6 AWG conductor.	FC000024





### LightGuard™ 150 Sealed Fiber Optic Splice Closure

The LightGuard (LG) 150 is a sealed dome closure designed for small count fiber splicing ( $\leq 48$  single or 192 mass) in a butt configuration. Utilized in aerial or underground environments where a sealed closure is required, the LG-150 is ideal for express or ring applications and requires no tools for re-entry.

#### Features

- Supports stranded loose tube, Uniflex® or ribbon fiber cables in either armored or dielectric configurations
- Installation and re-entry using common hand tools
- Fully sealed to protect fiber and splices ensuring longevity
- Fully kitted with all parts to install five cables
- Designed and tested to Telcordia® GR-771 requirements
- Rural Utilities Service (RUS) Listed

#### Specifications

PARAMETER	VALUE
Splice Capacity (Max.) – Single, Mass, Mechanical	48, 192, n/a
Number of Splice Trays (Max.) – Single, Mass, Mechanical	4, 3, n/a
Cable Entrance Configuration	Butt
Cable Ports	5
Cable Sizes (Max. O.D. - Min. O.D.)	5 (0.62" - 0.30")
Dimensions – (L x D) in. (cm)	18.25 x 8.75 (46.36 x 22.23)
Weight – lbs. (kg)	10.5 (4.76)

#### Ordering Information

DESCRIPTION	MODEL NO.	AFL NO.
LG-150 Sealed Fiber Optic Splice Closure – 36 Single or 192 mass fusion capable, includes (5) cable kits for sealing / retention and a grounding terminal. Cable Grounding Kits, hanger brackets and splice trays not included.	LG-150-U-0	FC000001-PS
LL-2450 Splice Tray – Stores (12) single fusion splices, includes base, cover, (2) six position single splice holders and tie-wraps. Maximum of (3) splice trays in the LG-150.	LL-2450	91957-00
LL-4850 Splice Tray – Stores (8) mass fusion splices, includes base, cover, (2) four position ribbon splice holders and tie-wraps. Maximum of (3) splice trays in the LG-150.	LL-4850	91958-00
LL-1248 Splice Tray – Stores (12) single fusion splices or (4) mass fusion splices, includes base, cover, (2) six position single splice holders, (1) four position ribbon splice holder and tie-wraps. Maximum of (3) splice trays in the LG-150.	LL-1248	911221-00-00
3-Flat Drop Grommet Kit – For use with standard flat drop cable	Flat Drop Grommet Kit	FC000655
Cable Grounding Kit – Includes harness and hose clamp. One kit needed per cable entry. For use with LG-150/250/350.	CGH-1	FC000003
Cable Grounding Kit (pack of 5) – Includes harness and hose clamp. For use with LG-150/250/350.	CGH-5	FC000040
Universal Aerial Offset Strand Hanger Kit – For use with LG-150/250/350.	Universal Hanger	FC000006
Extended Offset Strand Hanger Kit – For use with LG-150/250/350.	Extended Offset Hanger	FC000208
Pole or Wall Mount Bracket – For use with LG-150/250/350.	PWK	FC000592
OPGW Cable Bracket Kit for use when installing Sealed Closures (LG-150 / LG-250 / LG-350) to OPGW Cable. See details in Accessory section on page 13.	OPGW Bracket	FC000685
1X6 Fiber Router Kit	Router	FC000070
O-Ring Replacement Kit – For use with LG-150/250.	O-Ring Replacement	FC000004
LLAS-200-12SC Terminal Adapter. Used with LG-150 and LG-250. See details in Accessory section on page 14.	LLAS-200-12SC	FC000068

\* See pages 14 through 17 for Accessory Specifications.  
See page 24 for Splice Tray Specifications.

Telcordia is a registered trademark of Telcordia Technologies, Inc.



## LightGuard™ 250 Sealed Fiber Optic Splice Closure

The LightGuard (LG) 250 is a sealed dome closure designed for medium count fiber splicing (< 96 single or 288 mass) in a butt configuration. Utilized in aerial or underground environments where a sealed closure is required, the LG-250 is ideal for express or ring applications and requires no tools for re-entry.

### Features

- Supports stranded loose tube, Uniflex® or ribbon fiber cables in either armored or dielectric configurations
- Installation and re-entry using common hand tools
- Fully sealed to protect fiber and splices ensuring longevity
- Fully kitted with all parts to install five cables
- Designed and tested to Telcordia® GR-771 requirements
- Rural Utilities Service (RUS) Listed

### Specifications

PARAMETER	VALUE
Splice Capacity (Max.) – Single, Mass, Mechanical	96, 288, 48
Number of Splice Trays (Max.) – Single, Mass, Mechanical	4, 2, 4
Cable Entrance Configuration	Butt
Cable Ports	5
Cable Sizes (Max. O.D. - Min. O.D.)	5 (0.62" - 0.30")
Dimensions – (L x D) in. (cm)	19 x 8.75 (48.26 x 22.23)
Weight – lbs. (kg)	11.5 (5.23)

### Ordering Information

DESCRIPTION	MODEL NO.	AFL NO.
LG-250 Sealed Fiber Optic Splice Closure – 96 Single or 288 mass fusion capable, includes (5) cable kits for sealing / retention and a grounding terminal. Cable Grounding Kits, hanger brackets and splice trays not included.	LG-250-U-0	FC000002-PS
LL-2400 Splice Tray – Stores (24) single fusion splices, includes base, cover, (1) twenty-four position single splice holder and tie-wraps. Maximum of (4) trays in the LG-250.	LL-2400	91710-06
LL-2448 Splice Tray – Stores (24) single fusion or (4) mass fusion splices, includes base, cover, (1) twenty-four position single splice holder, (1) four position ribbon splice holder and tie-wraps. Maximum of (3) trays in the LG-250.	LL-2448	911289-00-02
LL-4800 Splice Tray – Stores (4) mass fusion splices, includes base, cover, (1) four position ribbon splice holder and tie-wraps. Maximum of (10) trays in the LG-300XL.	LL-4800	91711-07
LL-4848 Splice Tray – Stores (12) mass fusion splices, includes base, cover, (1) twelve position ribbon splice holder and tie-wraps. Maximum of (1) tray in the LG-250.	LL-4848	911437-00-02
Single Fusion Splice Tray for 48 Single Fused Fiber*	LL-2448-48S	FA000045
3-Flat Drop Grommet Kit – For use with standard flat drop cable	Flat Drop Grommet Kit	FC000655
OPGW Cable Bracket Kit for use only when installing closure on OPGW cable.	OPGW Bracket	FC000683
OPGW 250 Two-Cable Retention and Splicing Package	OPGW 250	FC000831
OPGW 250 Four-Cable Retention and Splicing Package	OPGW 250	FC000832
1X6 Fiber Router Kit	Router	FC000070
Cable Grounding Kit – Includes harness and hose clamp. One kit needed per cable entry. For use with LG-150/250/350.	CGH-1	FC000003
Cable Grounding Kit (pack of 5) – Includes harness and hose clamp. For use with LG-150/250/350.	CGH-5	FC000040
O-Ring Replacement Kit – For use with LG-150/250	O-Ring Replacement	FC000004
Universal Aerial Offset Strand Hanger Kit – For use with LG-150/250/350	Universal Hanger	FC000006
Extended Offset Strand Hanger Kit – For use with LG-150/250/350.	Extended Offset Hanger	FC000208
Pole or Wall Mount Bracket – For use with LG-150/250/350	PWK	FC000592
Terminal Adapter – Houses 12 SC bulkhead adapters, for use with LG-150/250	LLAS-200-12SC	FC000068

\* NOTE: When using LL-2448-48S capacity increases to 144 single splices. Capacity is cable OD driven.

\* See pages 14 through 17 for Accessory Specifications.

\* See page 24 for Splice Tray Specifications.

Telcordia is a registered trademark of Telcordia Technologies, Inc.





## MuxGuard™ 250 Sealed Fiber Optic Splice Closure

The MuxGuard 250 is a sealed dome closure designed with pre-installed Thin Film Filter (TFF) Compact Series CWDMs or DWDMs that allow for MUXing and DEMUXing within the same closure. The closure is also equipped with pre-installed splice trays that keep the bandwidth signals separated from each other, thus preventing accidental signal loss during maintenance activities. All fibers from the WDMs are routed to the appropriate splice tray through color-coded transition tubes. The closures are available with 4-channel or 8-channel units. As with other LG Series Sealed Closures, these closures require no tools for re-entry, and each closure may be padlocked as necessary.

### Specifications

PARAMETER	VALUE
Splice Capacity (Max.) – Single	96
Number of Splice Trays (Max.) – Single	4
Cable Entrance Configuration	Butt
Cable Ports	5
Cable Sizes (Max. O.D. - Min. O.D.)	5 (0.70" - 0.30")
Dimensions – (L x D) in. (cm)	19 x 8.75 (48.26 x 22.23)
Weight – lbs. (kg)	11.5 (5.23)

### Features

- Factory pre-installed devices
- Factory pre-installed transition tubes with fibers routed to appropriately designated bandwidth splice trays
- Color-coded transition tubes
- Installation and re-entry using common hand tools
- Fully sealed to protect fiber, splices and devices
- Fully kitted with all parts to install five cables
- Designed and tested to Telcordia® GR-771 requirements
- Rural Utilities Service (RUS) Listed

### Ordering Information

DESCRIPTION	MODEL NO.	AFL NO.
MuxGuard 250 Sealed Closure	LG-250-CWDM-8-301 (1471-1611) LG-250-CWDM-4-302 (1471-1531) LG-250-CWDM-4-303 (1551-1611) LG-250-CWDM-8-301-121-500	FC000800 FC000801 FC000802 FC000803
LL-2448 Splice Tray – Stores (24) single fusion or (4) mass fusion splices, includes base, cover, (1) twenty-four position single splice holder, (1) four position ribbon splice holder and tie-wraps. Maximum of (3) trays in the LG-250.	LL-2448	911289-00-02
1X6 Fiber Router Kit	Router	FC000070
O-Ring Replacement Kit – For use with LG-150/250	O-Ring Replacement	FC000004
Universal Aerial Offset Strand Hanger Kit – For use with LG-150/250/350	Universal Hanger	FC000006
Extended Offset Strand Hanger Kit – For use with LG-150/250/350.	Extended Offset Hanger	FC000208
Pole or Wall Mount Bracket – For use with LG-150/250/350	PWK	FC000592
Terminal Adapter – Houses 12 SC bulkhead adapters, for use with LG-150/250	LLAS-200-12SC	FC000068

\* See pages 14 through 17 for Accessory Specifications.  
See page 24 for Splice Tray Specifications.



CWDM 4-Channel Mini Module



CWDM 8-Channel Mini Module

## Thin Film Filter (TFF) Compact Series CWDM

AFL's TFF compact series CWDM modules deliver reliable performance and flexibility in every network application – from cellular backhaul and metro Ethernet to access and security. With its reduced package size, this new outside plant CWDM module has added flexibility, making deployment options more convenient.

This CWDM series is based on proven Thin Film Filter technology, offering low insertion loss and high thermal stability over the entire outside plant operating temperature range. Numerous configurations are available to meet unique needs and support new or existing network architectures. Typical options include a variety of configurations (mux, demux, and balanced), upgrade ports (1310, C-Band, and others), test / monitoring ports and multiple termination options.

### Features

- Low insertion loss
- Compact size
- High thermal stability
- Telcordia® GR-1221-CORE compliant
- RoHS 6/6 compliant

### Applications

- CWDM systems
- Metro ethernet / access networks
- Cellular backhaul networks

### Specifications

PARAMETER	UNIT	WITHOUT UPGRADE PORT		WITH 1310 NM UPGRADE PORT	
		4 Channel	8 Channel	4 Channel	8 Channel
Operating Wavelength	nm	1471~1611		1471~1611	
Channel Spacing	nm	20		20	
Center Wavelength	nm	Customer specified		Customer specified	
Pass Band	nm	± 6.5		± 6.5	
1310 Upgrade Port Pass Band	nm	—		1270~1350	
1310 Upgrade Port Insertion Loss	dB	—		1.0	
CWDM Channel Insertion Loss	dB	≤ 2.0	≤ 2.5	≤ 2.6	≤ 3.4
CWDM Adjacent Channel Isolation	dB	≥ 30		≥ 30	
CWDM Non-adjacent Channel Isolation	dB	≥ 45		≥ 45	
PDL	dB	≤ 0.2		≤ 0.2	
PMD	ps	≤ 0.1		≤ 0.25	
Return Loss	dB	≥ 45		≥ 45	
Directivity	dB	≥ 50		≥ 50	
Maximum Input Power	mW	≤ 300		≤ 300	
Package Size	Mm	60 (l) x 35 (w) x 6(d)		70(l) x 45(w) x 9(d)	
Operating Temperature	°C	-40 ~ +85		-40 ~ +85	

\* Actual optical specifications will vary based on product configuration

1. Higher and lower channel counts available



LG-350 with LLAS-300-245C

### LightGuard™ 350 Sealed Fiber Optic Splice Closure

The LightGuard (LG) 350 is a sealed dome closure designed for large count fiber splicing ( $\leq 384$  single or 1152 mass) in a butt configuration. Utilized in aerial or underground environments where a sealed closure is required, the LG-350 is ideal for express, ring or long haul applications and requires no tools for re-entry.

#### Features

- Supports stranded loose tube, Uniflex® or ribbon fiber cables in either armored or dielectric configurations
- Installation and re-entry using common hand tools
- Fully sealed to protect fiber and splices ensuring longevity
- Fully kitted with all parts to install five cables
- Designed and tested to Telcordia® GR-771 requirements
- Rural Utilities Service (RUS) Listed

#### Specifications

PARAMETER	VALUE
Splice Capacity (Max.) – Single, Mass, Mechanical	384, 1152, 108
Number of Splice Trays (Max.) – Single, Mass, Mechanical	12, 8, 8
Cable Entrance Configuration	Butt
Cable Ports / Cable Sizes (Max. O.D. - Min. O.D.)	5 / 7 (using dual cable configuration for Express ports) 2 Express (1.00" - 0.40") 3 Drop (0.80" - 0.30")
Dimensions – (L x D) in. (cm) / Weight - lbs. (kg)	28.0" x 10.0" (71.12 x 25.40) / 14 (6.35)

*continued on next page →*

## LightGuard™ 350 Sealed Fiber Optic Splice Closure (cont.)

### Ordering Information

DESCRIPTION	MODEL NO.	AFL NO.
LG-350 Sealed Fiber Optic Splice Closure – 384 single fusion or 1152 mass fusion capable, includes (5) cable kits for sealing / retention (single and dual cable configurations for express ports) and a grounding terminal. Cable Grounding Kits, hanger brackets and splice trays not included.	LG-350-U-0	FC000009-PS
LL-2400 Splice Tray – Stores (24) single fusion splices, includes base, cover, (1) twenty-four position single splice holder and tie-wraps. Maximum of (12) trays in the LG-350.	LL-2400	91710-06
LL-2448 Splice Tray – Stores (24) single fusion or (4) mass fusion splices, includes base, cover, (1) twenty-four position single splice holder, (1) four position ribbon splice holder and tie-wraps. Maximum of (8) trays in the LG-350.	LL-2448	911289-00-02
LL-4800 Splice Tray – Stores (4) mass fusion splices, includes base, cover, (1) four position ribbon splice holder and tie-wraps. Maximum of (10) trays in the LG-300XL.	LL-4800	91711-07
LL-4848 Splice Tray – Stores (12) mass fusion splices, includes base, cover, (1) twelve position ribbon splice holder and tie-wraps. Maximum of (6) trays in the LG-350.	LL-4848	911437-00-02
LL-4896 Splice Tray – Stores (96) single fusion splices or (24) mass fusion splices, includes base, cover, (16) six position single splice holders, (6) four position ribbon splice holders and tie-wraps. Maximum of (4) trays using single fusion or (5) trays using mass fusion in the LG-350.	LL-4896	911676-00-02
LL-2448-48S Splice Tray – Stores (24) single fusion splices. May be installed in the LG-250, LG-350, LG-350-XL, LG-410, LG-500, LG-600 Splice Closures, the LL-400B and LL-400S Distribution Enclosures and the LL-2400 Pedestal.	LL-2448-48S	FA000045
LL-7644 Universal Splice Tray – Stores (60) single fusion splices or (288) mass fusion splices or a combination of both in an easy-to-use, deep splice tray. For use with the LG-350 and LG-350XL Closures.	LL-7644	FA000044
LL-7060 Splice Tray – Stores (60) single fusion splices in an easy-to-use, deep splice tray. For use with the LG-350 and LG-350XL Closures.	LL-7060	FA000042
LL-7144 Splice Tray – Stores (288) mass fusion splices in an easy-to-use, deep splice tray. For use with the LG-350 and LG-350XL Closures.	LL-7144	FA000043
4-Flat Drop Grommet Kit – For use with standard flat drop cable and round cable up to 0.256" O.D.	Flat Drop Grommet Kit	FC000422
Cable Grounding Kit – Includes harness and hose clamp. One kit needed per cable entry. For use with LG-150/250/350.	CGH-1	FC000003
Cable Grounding Kit (pack of 5) – Includes harness and hose clamp. For use with LG-150/250/350.	CGH-5	FC000040
O-Ring Replacement Kit – For use with LG-350.	O-Ring LG-300	912231-00-00
Universal Aerial Strand Hanger Kit – For use with LG-150/250/350.	Universal Hanger	FC000006
Extended Offset Strand Hanger Kit – For use with LG-150/250/350.	Extended Offset Hanger	FC000208
Pole or Wall Mount Bracket – For use with LG-150/250/350.	PWK	FC000592
OPGW Cable Bracket Kit for use only when installing closure on OPGW cable.	PGW Bracket	FC000683
OPGW 350 Two-Cable Retention and Splicing Package	OPGW 350	FC000833
OPGW 350 Two-Cable Retention and Splicing Package	OPGW 350	FC000834
1X6 Fiber Router Kit	Router	FC000070
Terminal Adapter – Houses 24 SC bulkhead adapters, for use with LG-350	LLAS-300-24SC	FC000069
Terminal Adapter – Empty plate	LLAS-350-96LC	FC000736

\* See pages 14 through 17 for Accessory Specifications.  
See page 24 for Splice Tray Specifications.

Telcordia is a registered trademark of Telcordia Technologies, Inc.



## LightGuard™ 350-AC Drop Access Sealed Fiber Optic Splice Closure

AFL's LightGuard (LG) 350-AC sealed dome closure is intended for utilization in aerial or underground environments where a sealed closure is required and space may be limited. Designed for "drop access" applications providing access for up to 12 drops, this closure is also versatile enough to be used for splicing up to 144 single splices in a butt configuration. Ideal for Fiber-to-the-Home installations in small hand-hole applications, the LG-350-AC requires no special tools or extra kits for re-entry.

### Specifications

PARAMETER	VALUE
Splice Capacity (Max.) – single, mass	144, 432
Number of Splice Trays (Max.) – single, mass	4, 3
Cable Entrance Configuration	Butt
Cable Ports	5 Ports (14 cables total using flat-drop grommets)
Cable Sizes (O.D.)	Express Side – 2 (0.4"–1.0") Drop Side – 12 (0.31" flat-drop or 0.25" round)
Dimensions (L x D) – inches (cm)	19.8" x 10.0" (50.3 x 25.4)
Weight - lbs. (kg)	12 (5.44)

### Ordering Information

DESCRIPTION	MODEL NO.	AFL NO.
Dome Closure, 144 single fusion capable (with additional trays), 5 cable entry kits for sealing and retention (2-single port for express and 3-quad port for drop), ground terminal, (1) LL-4808L splice tray. No cable grounding or hanger brackets are included.	LG-350-AC	FC000412
Single Fusion Splice Tray - Stores up to 36 single fused fibers (maximum of 4 trays in LG-350-AC)	LL-4808L	FA000021
Mass Fusion Splice Tray - Stores up to 144 mass fused fibers (maximum of 4 trays in LG-350-AC)	LL-4808R	FA000020
Single Cable Branch Grommet Kit	Branch Grommet Kit	FC000628
Cable Grounding Kit - For LG-150/250/350	CGH-1	FC000003
5 Cable Grounding Kits - For LG-150/250/350	CGH-5	FC000040
O-Ring Replacement Kit for the LG-350	O-Ring LG-300	912231-00-00
Universal Aerial Strand Hanger kit - For LG-150/250/350	Universal Hanger	FC000006
Extended Offset Strand Hanger Kit - For LG-150/250/350	Extended Offset Hanger	FC000208
Pole or Wall MT Bracket for use with LG150/250/350	PWK	FC000592
OPGW Cable Bracket Kit	OPGW Bracket	FC000683

\* Unit available for Mass/Ribbon utilization. Consult customer service for details.

\* See pages 14 through 17 for Accessory Specifications.  
See page 24 for Splice Tray Specifications.

### Features

- Less than 20" overall length; ideal for small hand-holes
- Supports standard loose tube, outside plant ribbon and Uniflex® fiber optic cables in both dielectric and armored configurations
- Installation and re-entry using common hand tools
- Fully sealed to protect fiber and splices, ensuring longevity
- Fully kitted with all parts to install two cables and up to 12 drops
- Designed and tested to Telcordia® GR-771 requirements
- Rural Utilities Service (RUS) listed

Telcordia is a registered trademark of Telcordia Technologies, Inc.



### LightGuard™ 350XL Sealed Fiber Optic Splice Closure

The LightGuard (LG) 350XL is a sealed dome closure designed for large count fiber splicing (up to 864 single or 2592 mass) in a butt configuration. Utilized in aerial or underground environments where a sealed closure is required, the LG-350XL requires no tools for re-entry.

#### Specifications

PARAMETER	VALUE						
Splice Capacity (Max.) – Single, Mass, Mechanical	864, 2592, 288						
Number of Splice Trays (Max.) – Single, Mass, Mechanical	9, 9, 9						
Cable Entrance Configuration	Butt						
Cable Ports / Cable Sizes (Max. O.D.)	5 ports / 7 with Dual Express Grommet						
	<table> <tr> <th>Express Port</th><th>Drop Port</th></tr> <tr> <td>Single 1.18" - 0.40"</td><td>Single 1.08" - 0.30"</td></tr> <tr> <td>Double 0.56" - 0.44"</td><td></td></tr> </table>	Express Port	Drop Port	Single 1.18" - 0.40"	Single 1.08" - 0.30"	Double 0.56" - 0.44"	
Express Port	Drop Port						
Single 1.18" - 0.40"	Single 1.08" - 0.30"						
Double 0.56" - 0.44"							
Dimensions - (L x D) in. (cm) / Weight - lbs. (kg)	31.0" x 12.0 (78.74 x 30.48) / 25 lbs. (11.3 kg)						

#### Features

- Can accommodate up to 7 cables
- Supports stranded loose tube, Uniflex® or ribbon fiber cables in either armored or dielectric configurations
- Flanged O-Ring and T-bolt V-band for increased protection at 20' waterhead
- Oversized basket allows multiple configurations of slack storage
- Holds Pirelli™ 1152 fiber count cable at a diameter of 1.35"

#### Ordering Information

DESCRIPTION	MODEL NO.	AFL NO.
LG-350XL Sealed Fiber Optic Splice Closure – 864 single fusion or 2592 mass fusion capable, includes (5) cable kits for sealing / retention (single and dual cable configurations) and a grounding terminal. Cable Grounding Kits, hanger brackets and splice trays not included	LG-300XL-U-0	FC000010-PS
LL-4896 Splice Tray – Stores (96) single fusion splices or (24) 288 mass fusion splices, includes base, cover, (16) six position single splice holders, (6) four position ribbon splice holders and tie-wraps. Maximum of (9) trays in the LG-350XL	LL-4896	911676-00-02
LL-2400 Splice Tray – Stores (24) single fusion splices, includes base, cover, (1) twenty-four position single splice holder and tie-wraps. Maximum of (12) trays in the LG-350XL.	LL-2400	91710-06
LL-2448 Splice Tray – Stores (24) single fusion or (4) mass fusion splices, includes base, cover, (1) twenty-four position single splice holder, (1) four position ribbon splice holder and tie-wraps. Maximum of (8) trays in the LG-350XL.	LL-2448	911289-00-02
LL-4800 Splice Tray – Stores (4) mass fusion splices, includes base, cover, (1) four position ribbon splice holder and tie-wraps. Maximum of (10) trays in the LG-300XL.	LL-4800	91711-07
LL-4848 Splice Tray – Stores (12) mass fusion splices, includes base, cover, (1) twelve position ribbon splice holder and tie-wraps. Maximum of (10) trays in the LG-350XL.	LL-4848	911437-00-02
LL-2448-48S Splice Tray – Stores (48) single fusion splices. May be installed in the LG-250, LG-350, LG-350-XL, LG-410, LG-500, LG-600 Splice Closures, the LL-400B and LL-400S Distribution Enclosures and the LL-2400 Pedestal.	LL-2448-48S	FA000045
LL-7060 Splice Tray – Stores (60) single fusion splices in an easy-to-use, deep splice tray. For use with the LG-350 and LG-350XL Closures.	LL-7060	FA000042
LL-7144 Splice Tray – Stores (288) mass fusion splices in an easy-to-use, deep splice tray. For use with the LG-350 and LG-350XL Closures.	LL-7144	FA000043
LL-7644 Universal Splice Tray – Stores (60) single fusion splices or (288) mass fusion splices or a combination of both in an easy-to-use, deep splice tray. For use with the LG-350 and LG-350XL Closures.	LL-7644	FA000044
LG-350XL Dual Axis Express Grommet	Dual Axis Exp	FC000664
Cable Grounding Kit (pack of 5) – Includes harness and hose clamp. For use with LG-350XL	Cable Bonding Kit - 300XL	FC000041
O-Ring Replacement Kit – For use with LG-300XL	O Ring - 300XL	FC000016
Strand Mount Hanger Bracket – For use with LG-300XL	XL Hangar Bracket	912215-00-00
1X6 Fiber Router Kit	Router	FC000070

\* See page 24 for LL4896 Splice Tray Specifications.



### LightGuard™ 700 Sealed Fiber Optic Splice Closure



With a capacity for up to 288 single fusion or 432 mass fusion splices, AFL's LightGuard (LG) 700 in-line sealed closure is suitable for use in underground and aerial applications. The LG-700 hosts a dry, permanent peripheral grommet seal that allows for easy re-entry, eliminating the need for a re-entry kit. The closure is equipped with eight cable entry ports (four at each end of the closure), which allows for additional cables to be installed without disturbing previously installed cables. The 3/8" stainless steel captive bolts require only a standard nut driver or 216 tool for installation or re-entry. The LG-700 features a grounding system that may be used for common or isolated/grounding applications.

#### Features

- Cable retention clamps provide pullout rating required by Telcordia®
- Dry, permanent peripheral grommet seal allows for easy re-entry
- Space for large amounts of buffer tubing with tie downs for organization and installation
- Eight cable entry ports; previously installed cables are not disturbed when installing additional cables
- Common or isolated grounding/bonding
- Designed and tested to Telcordia GR-771 requirements

#### Specifications

PARAMETER	VALUE
Splice Capacity (Max.) – single, mass	288, 432
Number of Splice Trays (Max.) – single, mass	12, 9
Cable Entrance Configuration	In-line, Butt
Cable Ports	8 Ports
Cable Sizes (O.D.)	4 @ 0.77" 4 @ 1.00"
Dimensions (L x D) – inches (cm)	24.5" x 10.7" x 4.7" (62.2 x 25.4 x 11.9)
Weight - lbs. (kg)	8.5 (3.85)

#### Ordering Information

DESCRIPTION	MODEL NO.	AFL NO.
LG-700 Bonded Sealed In-line/Butt Closure - Equipped with (3) cable sealing/retention kits, (3) cable bonding kits, (2) single fusion splice trays	LG-700	911605-00-00
Single Fusion Splice Tray - Stores 24 single fused fibers, base, cover, (1) twenty-four position fusion splice holder, tie-wraps.	LL-2400	91710-06
Universal Splice Tray - Stores 24 single fused fibers or 4 mass fusion sleeves (48 fibers), base, deep cover, tie-wraps.	LL-2448	911289-00-02
Mass Fusion Splice Tray - Stores 12 mass fusion sleeves (144 fibers) Base, deep cover, (1) twelve position mass sleeve holder, tie-wraps.	LL-4848	911437-00-02

## LightGuard™ Sealed Splice Closure Accessories

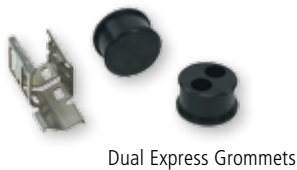


### Dual Express Grommets for LG-350XL

Used on the express side of the LG-350XL closure for installing additional branches. Use the drop ports for the express cable while the express ports may be used to introduce small branch cables. Minimum cable diameter is 0.380" - 0.560".

#### Ordering Information

DESCRIPTION	AFL NO.
Dual Express Grommets for LG-350XL	FC000688



Dual Express Grommets



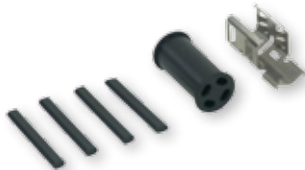
Quad Express Grommets

### Dual and Quad Express Grommets for LG-350

Used on the express side of the LG-350 closure for installing additional branches. Use the drop ports for the express cable while the express ports may be used to introduce small branch cables. A 4-drop flat grommet may be used if drops are also required. Cable diameter for dual grommets is 0.26" - 0.44"; for quad, 0.24" - 0.382".

#### Ordering Information

DESCRIPTION	AFL NO.
Dual Express Grommets for LG-350	FC000337
Quad Express Grommets for LG-350	FC000421



### 4-Port Flat Drop Grommet Kit for LG-350/LG-350-AC

Used with the LG-350 and LG-350-AC Sealed Closures. Allows for quick addition of drop cables as required. Simply replace the drop port grommets with this grommet kit and install standard flat drop cable or round cable up to 0.25" in diameter.

#### Ordering Information

DESCRIPTION	AFL NO.
4-Port Flat Drop Grommet Kit for LG-350/LG-350-AC	FC000422



### Single Cable and 3-Port Flat Drop Grommet Kit for LG-150/LG-250

Used with the LG-150 and LG-250 Sealed Closures. Allows for quick addition of drop cables as required. Simply replace the drop port grommets with this grommet kit. Both closures will accept standard flat drop cable or round cable up to 0.250" in diameter.

#### Ordering Information

DESCRIPTION	AFL NO.
Single Cable Grommet Kit for the LG-150/LG-250	FC000704
3-Port Flat Drop Grommet Kit for the LG-150/LG-250	FC000655

## LightGuard™ Sealed Splice Closure Accessories (cont.)



### Single Cable Grommet Kits for LG-350-AC and LG-350

Used with the LG-350-AC when a branch cable is required with the drop cables. May also be used for with the LG-350 as replacement grommets. Simply remove the flat drop grommet and replace with the single cable grommets.

#### Ordering Information

DESCRIPTION	AFL NO.
Single Cable Grommet Kit, Drop Port for LG-350-AC	FC000628
Express Single Cable Grommet Kit for LG-350	FC000726
Drop Single Cable Grommet Kit for LG-350	FC000727

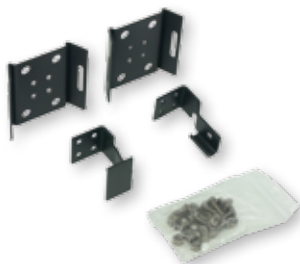


### OPGW Cable Bracket for LG-150/LG-250/LG-350

Attaches to the outer grounding studs of the LG-150/LG-250 or LG-350 Sealed Closures. Stainless steel hose clamps secure the OPGW cable to the bracket preventing twisting or movement.

#### Ordering Information

DESCRIPTION	AFL NO.
OPGW Cable Bracket for the LG-150/LG-250/LG-350 for 2 cables.	FC000683
OPGW Cable Bracket Kit for use when installing Sealed Closures (LG-150/LG-250) to 4 OPGW Cables.	FC000746
OPGW Cable Bracket Kit for use when installing Sealed Closures (LG-350) to 4 OPGW Cables.	FC000747



### Pole/Wall Mount Bracket for LG-150/LG-250/LG-350

Used with the LG-150, LG-250, LG-350 and LG-350-AC to secure the closures onto poles or walls in a vertical orientation. Slots on the brackets allow for strapping onto steel or cement poles.

#### Ordering Information

DESCRIPTION	AFL NO.
Pole/Wall Mount Bracket for LG-150/LG-250/LG-350/LG-350-AC	FC000592



### Universal Aerial Bracket and Extended Offset Bracket

Used with the LG-150, LG-250, LG-350 and LG-350-AC for mounting on aerial or messengers.

#### Ordering Information

DESCRIPTION	AFL NO.
Universal Aerial Bracket for LG-150/LG-250/LG-350/LG-350-AC	FC000006
Extended Offset Bracket	FC000208

### LightGuard™ Sealed Splice Closure Accessories (cont.)



#### Strand Mount Hanger Bracket for LG-350XL

Used with the LG-350XL.

##### Ordering Information

DESCRIPTION	AFL NO.
Strand Mount Hanger Bracket – For use with LG-350XL	912215-00-00

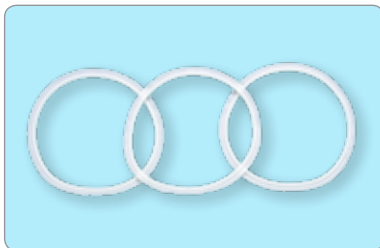


#### Cable Ground Kits

Used with the LG-150, LG-250, and LG-350.

##### Ordering Information

DESCRIPTION	AFL NO.
Cable Grounding Kit – Includes harness and hose clamp. One kit needed per cable entry. For use with LG-150/250/350.	FC000003
Cable Grounding Harness Kit – Includes (4) 8" long ground harnesses constructed of #6 AWG conductor.	FC000024
Cable Grounding Kit (pack of 5) – Includes harness and hose clamp. For use with LG-150/250/350.	FC000040
Cable Grounding Kit (pack of 5) – Includes harness and hose clamp. For use with LG-350XL	FC000041

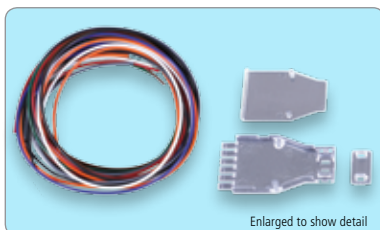


#### O-Ring Replacement Kits

Used with the LG-150, LG-250, LG-350, and LG-350XL.

##### Ordering Information

DESCRIPTION	AFL NO.
O-Ring Replacement Kit – For use with LG-150/250	FC000004
O-Ring Replacement Kit – For use with LG-300XL	FC000016
O-Ring Replacement Kit – For use with LG-350.	912231-00-00



#### 1x6 Cable Router Kit

Used with the LG-150, LG-250, LG-350 and LG-350-AC.

##### Ordering Information

DESCRIPTION	AFL NO.
1X6 Cable Router Kit	FC000070



LLAS-200-12SC



LLAS-300-24SC

## LightLink™ Fiber Optic Terminal Adapters for Sealed Fiber Optic Splice Closures

The LightLink Access Solution (LLAS) Terminal Adapters provide the interconnect and/or demarcation of optical fibers for Fiber-to-the-Node (FTTN), Fiber-to-the-Home (FTTH), Fiber-to-the-Premise (FTTP), and Fiber-to-the-Curb (FTTC) applications. The adapter plates are designed to be used in conjunction with AFL Sealed Fiber Optic Splice Closures and convert the standard closure design into an FTTX or demarcation type fiber optic splice closure. The adapter plates provide mounting positions ranging from six to 24 SC-style bulkheads (depending on the model). The interconnection and routing of 900  $\mu$ m SC pigtails with pre-connectorized SC drop cables is managed through routing rings on the terminal adapter. Three versions are available and are matched to the LG-150, LG-250 and LG-350 series sealed fiber optic splice closures.

### Ordering Information

DESCRIPTION	MODEL NO.	AFL NO.
Terminal Adapter for LG-150/250 Sealed Splice Closure	LLAS-200-12SC	FC000068
Terminal Adapter for LG-350 Sealed Splice Closure	LLAS-300-24SC	FC000069
Terminal Adapter – Empty plate	LLAS-350-96-LC	FC000736
Terminal Adapter – with Installed SCAPC (48)	LLAS-350-96-LC	FC000737
Terminal Adapter – with Installed SCUPC (48)	LLAS-350-96-LC	FC000738
Terminal Adapter – with Installed LCUPC Duplex SC Foot Print (48)	LLAS-350-96-LC	FC000739
Terminal Adapter – with Installed LCAPC Duplex SC Foot Print (48)	LLAS-350-96-LC	FC000765

Blank bulkhead adapter plate and routing rings are included.  
SC bulkheads, SC pigtails (900  $\mu$ m) and SC pre-connectorized drop cable may be ordered separately.

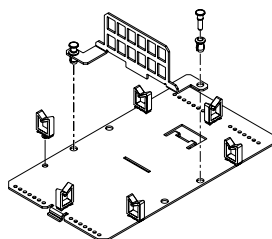
### Accessories Ordering

DESCRIPTION	AFL NO.
(1) Small Flange SC/UPC Bulkhead adapter (Blue)	C058475
(1) Small Flange SC/APC Bulkhead adapter (Green)	C147880
(1) Pigtail - SC/UPC Connector with (1) meter 900 $\mu$ m fiber	C146507-0001
(1) Pigtail - SC/APC Connector with (1) meter 900 $\mu$ m fiber	C203278-0001

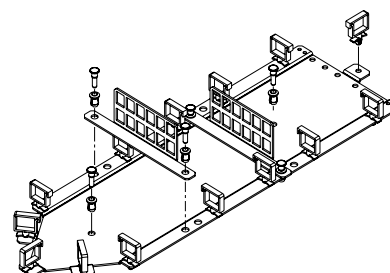


LLAS-350-96LC

### LLAS-200-12SC



### LLAS-300-24SC





### LightGuard™ Aerial Weathertight Fiber Optic Splice Closures

The AFL family of Aerial Weathertight Splice Closures is designed to provide a cost-effective solution for your aerial splicing needs. Quality engineering reduces the installation time, training and complexity associated with fiber splicing in the field. The closures have all been designed to be installed without the need for special tools, heat, adhesives, drills, or any powered equipment. Durable and easy to install, these closures will improve productivity, reduce labor expenses and last the life of the plant.

#### Features

- Individual, patented, self-sizing cable grommets and strength member tie downs provide for cable additions without disturbing those previously installed
- Unique tongue-in-groove closure seal and back-to-back grommet design provides for a weathertight and insect seal
- Closures are re-enterable without the need for any re-entry kits, special tools or sealants
- Designed and tested to Telcordia® GR-771 aerial weathertight closure requirements
- Rural Utilities Service (RUS) Listed

#### Specifications

PARAMETER	LG-410-U-0	LG-420-U-0	LG-500-U-0	LG-600-U-0
Splice Capacity (Max.) - Single, Mass, Mechanical	72, 288, 36	12, 48, 12	96, 432, 36	288, 1152, 96
Splice Tray Capacity - Single, Mass	3, 2	n/a, n/a	3, 2	12, 8
Cable Ports	4-8	4-6	4-8	6-12 (6 per end)
Cable Entrance	In-line, Butt	In-line (taut sheath)	In-line, Butt	In-line, Butt
Cable Sizes (O.D.)	4 @ 0.3-0.8" Up to 8 with Dual Grommet Kits 4 @ 0.3-0.65" 4 @ 0.3-0.5"	4 @ 0.3-0.8" Up to 6 with Dual Grommet Kits 2 @ 0.3-0.77" 2 @ 0.3-0.65" 2 @ 0.3-0.5"	4 @ 0.3-0.8" Up to 8 with Dual Grommet Kits 4 @ 0.3-0.65" 4 @ 0.3-0.5"	6 @ 0.4-0.87" Up to 12 with Dual Grommet Kits 6 @ 0.4-0.87" 6 @ 0.5"
CLOSURE TEST <sup>1,2</sup>				
Cable Retention (100 lbs.)	Passed	Passed	Passed	Passed
Impact Resistance (0-40 °C)	Passed	Passed	Passed	Passed
Chemical Resistance	Passed	Passed	Passed	Passed
Cable Flexing	Passed	Passed	Passed	Passed
Dust (Weather Tightness)	Passed	Passed	Passed	Passed
Driving Rain	Passed	Passed	Passed	Passed
Rodent Test	Passed	Passed	Passed	Passed
Dimensions (L x W x D) in. (cm)	36.00 x 8.00 x 4.00 (91.44 x 20.32 x 10.16)	36.00 x 8.00 x 4.00 (91.44 x 20.32 x 10.16)	27.00 x 8.25 x 4.00 (68.58 x 20.96 x 10.16)	27.00 x 11.25 x 7.50 (68.58 x 28.58 x 19.05)
Weight lbs. (kg)	8.5 (3.86)	8.5 (3.86)	6.4 (2.90)	18 (8.16)

Note 1: Tested to Telcordia GR-771-Core and Aerial Strand requirements

Note 2: Not all Telcordia tests are listed due to space constraints; All closures are designed and tested to appropriate aerial test requirements

Telcordia is a registered trademark of Telcordia Technologies, Inc.





### LightGuard™ 410 Aerial Weathertight Fiber Optic Splice Closure

The AFL LightGuard (LG) 410 Aerial Weathertight Fiber Optic Splice Closure is designed for small to medium count fiber splicing (< 72 single or 288 mass) in aerial applications and provides additional fiber bundle storage with its extended length design.

#### Specifications

PARAMETER	VALUE
Splice Capacity (Max.) - Single, Mass, Mechanical	72, 288, 36
Number of Splice Trays (Max.) - Single, Mass	3, 2
Cable Entrance Configuration	In-line, Butt
Cable Ports	4-8
Cable Sizes (Max. O.D. – Min. O.D.)	4 @ 0.3-0.8" Up to 8 with Dual Grommet Kits 4 @ 0.3-0.65" 4 @ 0.3-0.5"
Dimensions - (L x D) in. (cm)	36.00 x 8.00 x 4.00 (91.44 x 20.32 x 10.16)
Weight - lbs. (kg)	8.5 (3.86)

#### Features

- Four individual, self-sizing grommeted cable ports (expandable to eight cable entrances)
- Splice trays available for single, mass or mechanical splicing
- Patented tongue-in-groove cover seal system
- Cable retention clamps provide pullout rating required by Telcordia
- Engineered thermoplastic to meet Telcordia® aerial and UV resistance requirements
- Rural Utilities Service (RUS) Listed

#### Ordering Information

DESCRIPTION	MODEL NO.	AFL NO.
Aerial Weathertight Universal Fiber Optic Splice Closure, up to 72 Single fusion splices, 4 cable ports expandable to 8. Equipped w/ 4 self sealing ports, (2) grounding terminals and standard length aerial hangers. Does not include splice trays or cable grounding kits.	LG-410-U-0	FC000022
Closure Extension Kit - Used to join multiple closures for extended sheath openings required to repair cable sheath and damaged fibers	LG-400/500	911499-00-00
Single Fusion Splice Tray - Stores 24 Single fused fibers (maximum of 3 trays in LG-410)	LL-2400	91710-06
Universal Splice Tray - Stores 24 Single fusion or 4 Mass fusion sleeves/48 Fibers (maximum of 2 trays in LG-410)	LL-2448	911289-00-02
Mass Fusion Splice Tray - Stores 4 Mass fusion sleeves/48 fibers (maximum of 2 trays in LG-410)	LL-4800	91711-07
Single Fusion Splice Tray Stores 48 Single Fused Fibers	LL-2448-48S	FA000045
6-Port Grommet Kit	LG-400/500	FC000573
Dual Grommet Cable Expansion Kit - Includes (2) LG-400 Dual Grommets and Cable Hardware	LG-400/LG-500 Dual Grommet Kit	911386-00-01
Dual Grommet Replacement Kit - Includes: (10) Dual Grommets for the LG-400 Series Closures	LG-400-Dual-Kit	911495-00-00
Grommet Replacement Kit, Kit - Includes: (10) Standard (single port) Grommets for the LG-400 Series Closures	LG-400-S	911496-00-00
Cable Grounding Harness - Includes: (4) Harness 8" #6 AWG	CGH-4	FC000024
Extended Aerial Hanger Kit	LG-400/500	911497-00-00
Adjustable Aerial Hanger Bracket Kit	LG-400/500/600	FC000572

\* See page 28 for Accessory and Splice Tray Specifications.



## LightGuard™ 420 Aerial Weathertight Fiber Optic Splice Closure

The AFL LightGuard (LG) 420 Aerial Weathertight Fiber Optic Splice Closure is designed to allow for Taut Sheath (no slack) splicing in aerial applications such as repairing cable sheath and fibers or providing mid-span access.

### Specifications

PARAMETER	VALUE
Splice Capacity (Max.) - Single, Mass, Mechanical	12, 48, 12
Number of Splice Trays (Max.) - Single, Mass	n/a, n/a
Cable Entrance Configuration	In-line (taut sheath)
Cable Ports	4-8
Cable Sizes (Max. O.D. – Min. O.D.)	4 @ 0.3-0.8" Up to 6 with Dual Grommet Kits 2 @ 0.3-0.8" 2 @ 0.3-0.65" 2 @ 0.3-0.5"
Dimensions - (L x D) in. (cm)	36.00 x 8.00 x 4.00 (91.44 x 20.32 x 10.16)
Weight - lbs. (kg)	8.5 (3.86)

### Features

- Four individual, self-sizing grommeted cable ports (expandable to six cable entrances)
- Taut Sheath splice module accommodates up to twelve fusion splices and supports storage of up to twelve optical connector adapters
- Patented tongue-in-groove cover seal system
- Cable retention clamps provide pullout rating required by Telcordia
- Engineered thermoplastic to meet Telcordia® aerial and UV resistance requirements
- Protective channel allowing taut fibers or bundles to pass through the closure
- Rural Utilities Service (RUS) Listed

### Ordering Information

DESCRIPTION	MODEL NO.	AFL NO.
Aerial Weathertight Universal Taut Sheath Splice Closure - Includes: (2) 6 fiber single fusion splice organizers, (2) Blank 6 adapter bulkheads (SC style), (2) grounding terminals and 4 individual self sealing ports. Expandable to 8 cable ports. Does not include cable grounding kits.	LG-420-U-0	FC000023
Closure Extension Kit - Used to join multiple closures for extended sheath openings required to repair cable sheath and damaged fibers	LG-400/500	911499-00-00
Dual Grommet Cable Expansion Kit - Includes (2) LG-400 Dual Grommets and Cable Hardware	LG-400/LG-500 Dual Grommet Kit	911386-00-01
Dual Grommet Kit - Includes (10) Dual Port Grommets	LG-400-Dual-Kit	911495-00-00
Grommet Replacement Kit, Kit - Includes: (10) Standard (single port) Grommets for the LG-400 Series Closures	LG-400-S	911496-00-00
Cable Grounding Harness - Includes: (4) Harness 8" #6 AWG	CGH-4	FC000024
Extended Aerial Hanger Kit	LG-400/500	911497-00-00
Adjustable Aerial Hanger Bracket Kit	LG-400/500/600	FC000572

\* See page 28 for Accessory and Splice Tray Specifications.



(FC000099 Model)

### Features

- Four individual, self-sizing grommeted cable ports:
  - 2 express ports
  - 2 multi-drop ports
- Up to 16 connections with use of LGX®118 duplex adapters
- Special multi-drop grommet and cable retention
- Special lock-out interior enclosure
- (2) 8-pack adapter plates
- Patented tongue-in-groove cover seal system
- Cable retention clamps provide pullout rating required by Telcordia
- Engineered thermoplastic to meet Telcordia® aerial and UV resistance requirements
- Protective channel allowing taut fibers or bundles to pass through the closure
- Rural Utilities Service (RUS) Listed

## LightGuard™ 420 FTTx Aerial Weathertight Fiber Optic Splice Closures

The AFL LightGuard (LG) 420 FTTx Aerial Weathertight Fiber Optic Splice Closures are designed to allow for Taut Sheath (no slack) splicing in aerial applications such as FTTx access networks. The LG-420 FTTx provides access for 1 to 16 subscriber drops.

### Specifications

PARAMETER	VALUE
Splice Capacity (Max.) - Single	Up to 32
Number of Splice Trays (Max.) - Single	1, n/a
Cable Entrance Configuration	In-line (taut sheath)
Cable Ports	2 - express    2 - multi-drop
Cable Sizes (Max. O.D. – Min. O.D.)	0.3-0.77" express 0.22-0.38" drop
Dimensions - (L x D) in. (cm)	36.00 x 8.00 x 4.00 (91.44 x 20.32 x 10.16)
Weight - lbs. (kg)	8.5 (3.86)

### Ordering Information

DESCRIPTION	MODEL NO.	AFL NO.
Aerial Weathertight Fiber Optic Splice Closure for FTTx applications— Includes: splice tray to accommodate up to 32 single fusion splices, (2) Blank adapter bulkheads (SC style), (2) Grounding terminals and 4 individual self-sealing ports. With an LGX118 footprint can connect up to 16 subscribers. Special interior lock out protective closure. Does not include cable grounding kits.	LG-420-U-FTTx	FC000099
Aerial Weathertight Fiber Optic Splice Closure with Grounding Kit for FTTx applications – Includes: splice tray to accommodate up to 32 single fusion splices, (2) Blank adapter bulkheads (SC style), (2) Grounding terminals and 4 individual self-sealing ports. With an LGX118 footprint can connect up to 16 subscribers. Special interior lock out protective closure.	LG-420-FTTx	FC000206
For Taut Sheath applications	LG-420-U-O	FC000023
Closure Extension Kit - Used to join multiple closures for extended sheath openings required to repair cable sheath and damaged fibers	LG-400/LG-500	911499-00-00
Dual Grommet Cable Expansion Kit - Includes (2) LG-400 Dual Grommets and Cable Hardware	LG-400/LG-500 Dual Grommet Kit	911386-00-01
Dual Grommet Kit - Includes (10) Dual Port Grommets	LG-400-Dual-Kit	911495-00-00
Grommet Replacement Kit, Kit - Includes: (10) Standard (single port) Grommets for the LG-400 Series Closures	LG-400-S	911496-00-00
Cable Grounding Harness - Includes: (4) Harness 8" #6 AWG	CGH-4	FC000024
Extended Aerial Hanger Kit	LG-400/LG-500	911497-00-00
Adjustable Bracket	LG-400/LG-500	FC000572

\* See page 28 for Accessory Specifications.

LGX is a registered trademark of Furukawa Electric North America, Inc.

Telcordia is a registered trademark of Telcordia Technologies, Inc.



## LightGuard™ 500 Aerial Weathertight Fiber Optic Splice Closure

The AFL LightGuard (LG) 500 Aerial Weathertight Fiber Optic Splice Closure is designed for small to medium count fiber splicing ( $\leq 96$  single, 432 using LL-2448-48S splice tray or 288 mass) in aerial applications. Compact in design for congested aerial construction.

### Specifications

PARAMETER	VALUE
Splice Capacity (Max.) - Single, Mass, Mechanical	96, 432, 36
Number of Splice Trays (Max.) - Single, Mass	3, 2
Cable Entrance Configuration	In-line, Butt
Cable Ports	4-8
Cable Sizes (Max. O.D. – Min. O.D.)	4 @ 0.3-0.77" Up to 8 with Dual Grommet Kits 4 @ 0.3-0.65" 4 @ 0.3-0.5"
Dimensions - (L x D) in. (cm)	27.00 x 8.25 x 4.00 (65.58 x 20.96 x 10.16)
Weight - lbs. (kg)	6.4 (2.90)

### Features

- Four individual, self-sizing grommeted cable ports
- Splice trays available for single, mass or mechanical splicing
- Patented tongue-in-groove cover seal system
- Cable retention clamps provide pullout rating required by Telcordia
- Engineered thermoplastic to meet Telcordia® aerial and UV resistance requirements
- Rural Utilities Service (RUS) Listed

### Ordering Information

DESCRIPTION	MODEL NO.	AFL NO.
Aerial Weathertight Universal Compact Splice Closure - Includes: (4) cable retention kits, (2) grounding terminals, (4) self sealing ports and standard aerial hangars. Does not include splice trays or cable grounding kits.	LG-500-U-0	FC000026
Single Fusion Splice Tray - Stores 24 single fused fibers (maximum of 3 trays in LG-500)	LL-2400	91710-06
Universal Splice Tray - Stores 24 Single Fusion, 4 Mass fusion sleeves/48 fibers or 12 Mechanical (maximum of 2 trays in LG-500)	LL-2448	911289-00-02
Mass Fusion Splice Tray - Stores 4 Mass fusion sleeves/48 fibers (maximum of 2 trays in LG-500)	LL-4800	91711-07
Mass Fusion Splice Tray - Stores 12 Mass fusion sleeves/144 fibers (maximum of 2 trays in LG-500)	LL-4848	911437-00-02
Single Fusion Splice Tray - Stores 48 Single Fused Fibers	LL-2448-48S	FA000045
Dual Grommet Kit - Includes: (2) small grommets and hardware	Dual Grommet Kit	911386-00-01
Dual Grommet Kit - Includes: (10) Dual Port Grommets	LG-400-Dual-Kit	911495-00-00
Closure Extension Kit - Used to join multiple closures for extended sheath openings required to repair cable sheath and damaged fibers	LG-400/500	911499-00-00
Cable Grounding Harness - Includes: (4) Harness 8" #6 AWG	CGH-4	FC000024
Extended Aerial Hanger Kit	LG-400/500	911497-00-00
Adjustable Aerial Hanger Kit Bracket Kit (included with closure)	LG-400/500/600	FC000572
LG-500 6-Port Drop Cable Kit	6-Port Drop Kit	FC000573

\* See page 28 for Accessory and Splice Tray Specifications.



## LightGuard™ 600 Aerial Weathertight Fiber Optic Splice Closure

The AFL LightGuard (LG) 600 Aerial Weathertight Fiber Optic Splice Closure is designed for high count fiber splicing ( $\leq 288$  single or 1152 mass) in aerial applications where a cost-effective high cable entry closure is desired.

### Specifications

PARAMETER	VALUE
Splice Capacity (Max.) - Single, Mass, Mechanical	288, 1152, 96
Number of Splice Trays (Max.) - Single, Mass, Mechanical	12, 8, 8
Cable Entrance Configuration	In-line, Butt
Cable Ports	4-8
Cable Sizes (Max. O.D. – Min. O.D.)	6 @ 0.4-0.87" Up to 12 with Dual Grommet Kits 6 @ 0.4-0.87" 6 @ 0.5"
Dimensions - (L x D) in. (cm)	27.00 x 11.25 x 7.50 (68.58 x 28.58 x 19.05)
Weight - lbs. (kg)	18 (8.16)

### Ordering Information

DESCRIPTION	MODEL NO.	AFL NO.
Aerial Weathertight Universal High Capacity Splice Closure - Includes: (4) cable retention kits, (2) grounding terminals, (6) self sealing ports and standard length aerial hangers. Does not include splice trays or cable grounding kits.	LG-600-U-0	FC000029
Single Fusion Splice Tray - Stores 24 Single fused fibers (maximum of 12 trays in LG-600)	LL-2400	91710-06
Universal Splice Tray - Stores 24 Single Fusion or 4 Mass fusion sleeves/48 fibers (maximum of 8 trays in LG-600)	LL-2448	911289-00-02
Mass Fusion Splice Tray - Stores 4 Mass fusion Sleeves/48 fibers (maximum of 8 trays in LG-600)	LL-4800	91711-07
Mass Fusion Splice Tray - Stores 12 Mass fusion sleeves /144 fibers (maximum of 6 trays in LG-300)	LL-4848	911437-00-02
Single Fusion Splice Tray to Accommodate 48 Splices	LL-2448-48S	FA000045
Dual Grommet Expansion Kit - Includes: (2) Dual Grommets, (1) CSM retention clamp, cable retention clamp and cable spacer	LG-600-DCEK	911406-00-00
Grommet Replacement Kit - Includes: (10) LG-600 Grommets	LG-600-S-Kit	91918-00
Cable Grounding Harness - Includes: (4) Harness 8" #6 AWG	CGH-4	FC000024
Extended Offset Aerial Hanger Kit	LG-600	91990-00
Adjustable Aerial Hanger Bracket Kit	LG-400/500/600	FC000572
SC 6-Pack Adapter Bracket	LG-600	FM001212
Multi-drop Cable Entry Kit - Allows six cable entries 0.23-0.48"	MDG-600	FC000352

\* See page 28 for Accessory and Splice Tray Specifications.

### Features

- Six individual, self-sizing grommeted cable ports (expandable to twelve cable entrances)
- Splice trays available for single, mass or mechanical splicing
- Patented tongue-in-groove cover seal system
- Integrated grounding clamp through aerial hangers
- Cable retention clamps provide pullout rating required by Telcordia
- Engineered thermoplastic to meet Telcordia® aerial and UV resistance requirements
- Rural Utilities Service (RUS) Listed

Telcordia is a registered trademark of Telcordia Technologies, Inc.



### LightGuard™ 600 FTTx Aerial Weathertight Fiber Optic Splice Closure

The AFL LightGuard (LG) 600 FTTx Aerial Weathertight Fiber Optic Splice Closure is designed for express slack loop fiber access splicing in aerial applications where up to 24 customer fiber drops are required.

#### Specifications

PARAMETER	VALUE
Splice Capacity (Max.) - Single, Mass	24, 48 (see FTTx Expansion Kit description in table below)
Number of Splice Trays (Max.) - Single, Mass, Mechanical	2, 2, 2
Cable Entrance Configuration	In-line, Butt
Cable Ports	6
Cable Sizes (Max. O.D. – Min. O.D.)	2 @ 0.4-0.87" 24 @ 0.23-0.48"
Dimensions - (L x D) in. (cm)	27.00 x 11.25 x 7.50 (68.58 x 28.58 x 19.05)
Weight - lbs. (kg)	18 (8.16)

#### Features

- Six individual, self-sizing grommeted cable ports; 2 express ports, 4 drop ports
- Up to 24 FTTx drops
- Up to 12 adapters using the LG-600 expansion kit and SC 6-pack adapter brackets
- Special multi-drop grommets and cable retention
- Integrated aerial splicing work tray
- Splice trays available for single or mass splicing
- Patented tongue-in-groove cover seal system
- Integrated grounding clamp through aerial hangers
- Cable retention clamps provide pullout rating required by Telcordia
- Engineered thermoplastic to meet Telcordia® aerial and UV resistance requirements
- Rural Utilities Service (RUS) Listed

#### Ordering Information

DESCRIPTION	MODEL NO.	AFL NO.
Aerial Weathertight Universal High Capacity FTTx Splice Closure - Includes: (6) cable retention kits, (2) grounding terminals, (6) self sealing ports and standard length aerial hangers. Does not include splice trays or cable grounding kits.	LG-600-FTTx	FC000291
Single Fusion Splice Tray - Stores 12 Single fused fibers	LL-2450	91957-00
Universal Splice Tray - Stores 12 Single Fusion or 4 Mass fusion sleeves/48 fibers	LL-1248	911221-00-00
Mass Fusion Splice Tray - Stores 4 Mass fusion Sleeves/48 fibers)	LL-4850	91958-00-00
Dual Grommet Expansion Kit - Includes: (2) Dual Grommets, (1) CSM retention clamp, cable retention clamp and cable spacer	LG-600-DCEK	911406-00-00
Single Port Grommet Kit - 2 Grommets and LSM Hardware	SEG-600-1	FC000623
Single Cable Entry Grommet Kit	SEG-600	FC000356
Cable Grounding Harness - Includes: (4) Harness 8" #6 AWG	CGH-4	FC000024
Extended Offset Aerial Hanger Kit	LG-600	91990-00
Multi-drop Cable Entry Kit - Allows six cable entries 0.23-0.48"	MDG-600	FC000352
FTTx Expansion Kit - Includes: Stacker Module (1) LG-600 SC-6-Pack Bracket. Allows use of standard splice trays LL2400, 2448, 2448-48S, and 4848 plus 5 trays up to 120 single, 288 mass.	LG-600-FTTx	FC000620

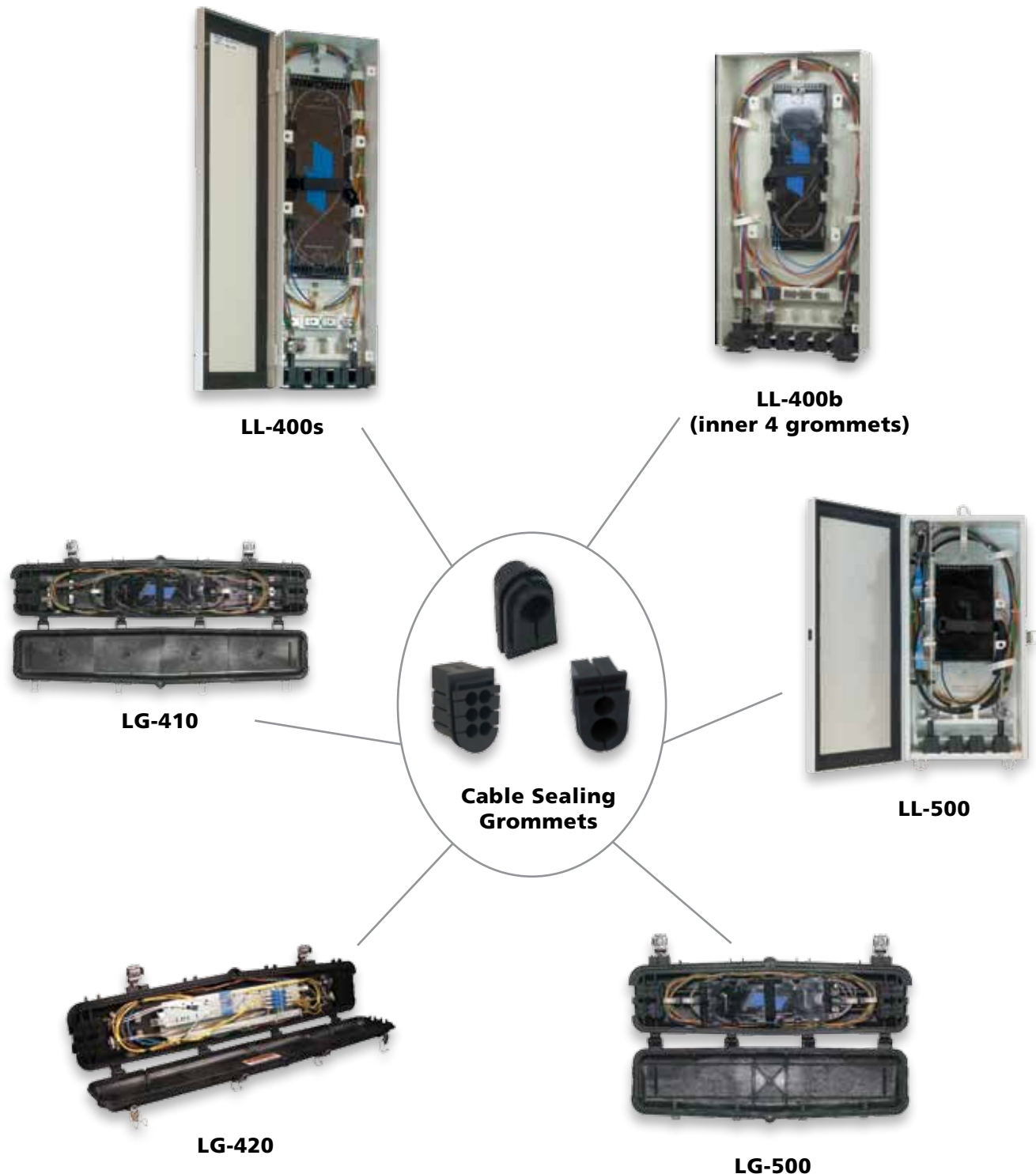


\* See page 28 for Accessory and Splice Tray Specifications.

Telcordia is a registered trademark of Telcordia Technologies, Inc.



### Interchangeable Grommets for Fiber Optic Splice Closures and Fiber Enclosures



### **Interchangeable Large Grommets for Fiber Optic Splice Closures and Fiber Enclosures**



**LL-400b  
(inner 4 grommets)**

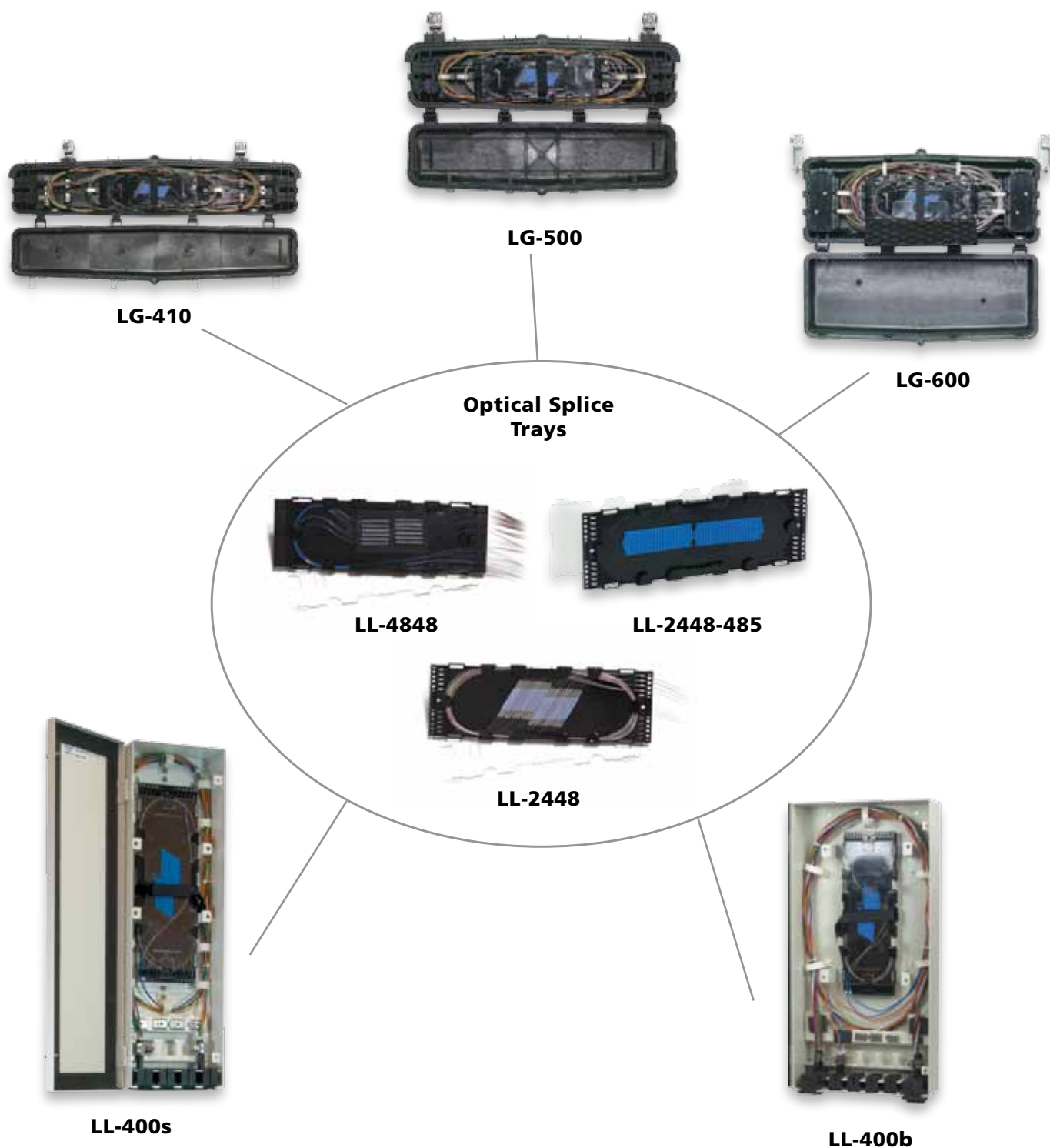


**LG-600**

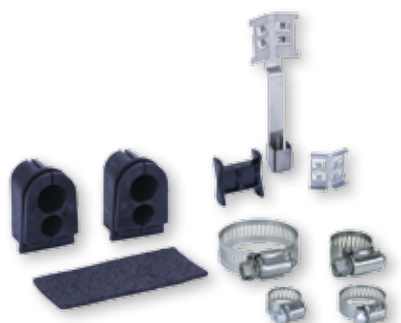


**Cable Sealing  
Grommets**

### Interchangeable Splice Trays for Fiber Optic Splice Closures and Fiber Enclosures



## LightGuard™ Aerial Splice Closure Accessories



Dual-port Grommet Kit



Multi-port Grommet Kit

### Dual- and Multi-port Grommet Kits for LG-400/LG-500/LG-600

For use with the LG-600 Aerial Weathertight Closure. Remove the single-port grommet set from the closure and replace with the multi-port grommet set when drops are required. Retention hardware included.

#### Ordering Information

DESCRIPTION	AFL NO.
Dual-port Grommet Kit for LG-400/LG-500. Diameter for large port is 0.375" - 0.65"; small port, 0.27" - 0.5".	911386-00-01
Dual Grommet Expansion Kit - Includes: (2) Dual Grommets, (1) CSM retention clamp, cable retention clamp and cable spacer.	911406-00-00
Dual Grommet Replacement Kit - Includes: (10) Dual Grommets for the LG-400 Series Closures. Diameter for large port is 0.375" - 0.65"; small port, 0.27" - 0.5".	911495-00-00
Grommet Replacement Kit, Kit - Includes: (10) Standard (single port) Grommets for the LG-400 Series Closures. Diameter from 0.3" - 0.82".	911496-00-00
Grommet Replacement Kit - Includes: (10) LG-600 Grommets. Diameter from 0.5" - 1.0".	91918-00
Multi-port Grommet Kit for LG-400/LG-500. Diameter up to 0.365".	FC000573
Multi-port Grommet Kit for LG-600. Diameter from 0.67" to 0.475"	FC000352

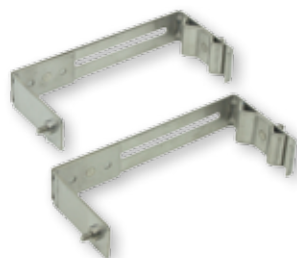


### Single-port Grommet Kit for LG-600 FTTx

For use with the LG-600 Aerial Weathertight Closure. Remove the multi-port grommet set from the closure and replace with the single-port grommet set when installing a branch cable. Hardware included.

#### Ordering Information

DESCRIPTION	AFL NO.
Single-port Grommet Kit for LG-600 FTTx	FC000623
Single Cable Entry Grommet Kit LG-600 Hardware	FC000356



### Adjustable Aerial Hanger Brackets

For use with all Aerial Weathertight Closures (LG-410, LG-420, LG-420 FTTx, LG-500, LG-600, and LG-600 FTTx). This pair of hanger brackets is shipped from the factory with all weathertight closures. Purchase separately for closures installed over existing utilities.

#### Ordering Information

DESCRIPTION	AFL NO.
Adjustable Aerial Hanger Brackets	911497-00-00

## LightGuard™ Aerial Splice Closure Accessories (cont.)

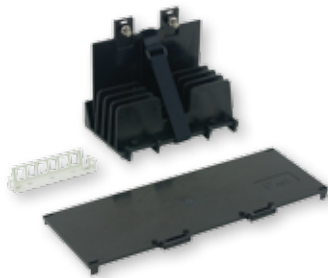


### SC 6-Pack Bracket for LG-600

Installs at each end of the stacker module in the LG-600. Allows up to (12) SC connectors or (24) LC connectors (using duplex connectors) to be installed in the closure. Snaps in place or use self-tapping screws to secure.

#### Ordering Information

DESCRIPTION	AFL NO.
SC 6-Pack Bracket Kit for LG-600	FM001294
SC 6-Pack Adapter Bracket	FM001212



### Expansion Kit for LG-600 FTTx

Expansion kit includes a Stacker Tray Module and one LG-600 SC-6-Pack Bracket to allow for up to six SC connections or 12 LC duplex connections. An additional bracket may be used to increase connectivity to 12 SC or 24 LC connections using duplex adapters. Allows increasing splices with LL-2400, LL-2448 and LL-2448-48S splice trays.

#### Ordering Information

DESCRIPTION	AFL NO.
Expansion Kit for LG-600 FTTx	FC000620

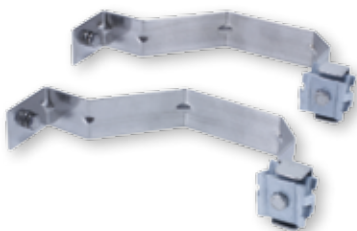


### Cable Grounding Harness

For use with all Aerial Weathertight Closures (LG-410, LG-420, LG-420 FTTx, LG-500, LG-600, and LG-600 FTTx).

#### Ordering Information

DESCRIPTION	AFL NO.
Cable Grounding Harness - Includes: (4) Harness 8" #6 AWG	FC000024



### Aerial Hanger Kits

For use with all Aerial Weathertight Closures (LG-410, LG-420, LG-420 FTTx, LG-500, LG-600, and LG-600 FTTx).

#### Ordering Information

DESCRIPTION	AFL NO.
Extended Aerial Hanger Kit	911497-00-00
Extended Offset Aerial Hanger Kit	91990-00

## LightLink™ Fiber Optic Splice Trays

AFL's LightLink series of Fiber Optic Splice Trays offers a variety of unique and flexible splice and storage possibilities. They are available in industry standard configurations (single, mass).



### Features

- In-line or butt splice capability (see model descriptions)
- Pre-formed radiuses maintain bend requirements
- Interlocking base and cover provides tray stability without the use of a bolt
- Extended finger guides easily store and route loose fiber or ribbon

### Ordering Information – Splice Trays for Sealed Fiber Optic Splice Closures

DESCRIPTION	MODEL NO.	AFL NO.	LG-55-U	LG-150-U	LG-250-U	LG-350-U	LG-350-AC	LG-350XL-U
For LG-55 only - Stores 24 single fused fibers, base, cover, (3) eight position splice holders, tie-wraps. 	LL-2425	FC000247	(1 tray max.) 24 Single	N/A	N/A	N/A	N/A	N/A
Stores 12 single fused fibers, base, cover, (2) six position splice holders, tie-wraps. 	LL-2450	91957-00	N/A	(3 trays max.) 36 Single	N/A	N/A	N/A	N/A
Stores 8 mass fusion sleeves, base, deep cover, (2) four position ribbon sleeve holders, tie-wraps. 	LL4850	91958-00	N/A	(3 trays max.) 144 Mass	N/A	N/A	N/A	N/A
Stores 12 single fused fibers or 4 mass fusion sleeves (48 fibers), base, cover, sleeve holders, tie-wraps. 	LL-1248	911221-00-00	N/A	(3 trays max.) 36 Single or 48 Mass	N/A	N/A	N/A	N/A
Stores 24 single fused fibers, base, cover, (1) twenty-four position sleeve holder, base, cover, tie-wraps. 	LL-2400	91710-06	N/A	N/A	(4 trays max.) 96 Single	(12 trays max.) 288 Single	N/A	(16 trays max.) 384 Single

**NOTES:** \* Recommended no more than two trays in the LG-250 due to unique ribbon to ribbon application.  
 \*\* This tray designed for LG-350 and LG-350XL only. The LG-350 requires special tray support bracket (either 911975 Standard or 911974 High Capacity)  
 \*\*\* Five trays can be installed in the LG-350 but it requires a 911974 High Capacity Support Bracket to allow for stacking all trays and not interfering with the dome.



## LightLink™ Fiber Optic Splice Trays (cont.)

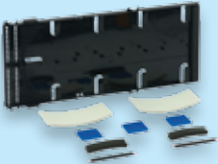
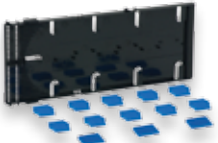
### Ordering Information – Splice Trays for Sealed Fiber Optic Splice Closures

DESCRIPTION	MODEL NO.	AFL NO.	LG-55-U	LG-150-U	LG-250-U	LG-350-U	LG-350-AC	LG-350XL-U
Stores 36 single fused fibers or 12 mass fusion sleeves (144 Fibers), sleeve holders, base, cover, tie-wraps. 	LL-4808L-R	FA000037	N/A	N/A	N/A	N/A	(4 trays max.) 144 Single (3 trays max.) 432 Mass	N/A
Stores 24 single fused fibers, 4 mass fusion sleeves (48 Fibers) or 12 mechanical splices, base, deep cover, tie-wraps. 	LL-2448	911289-00-02	N/A	N/A	(3 trays max.) 72 Single or 144 Mass	(8 trays max.) 192 Single or 384 Mass	N/A	(10 trays max.) 240 Single or 480 Mass
High density. Stores 48 single fused fibers, base, cover, (2) twenty-four position sleeve holders, tie-wraps. 	LL-2448-48S	FA000045	N/A	N/A	(2 trays max.) 96 Single	(6 trays max.) 288 Single	N/A	(18 trays max.) 864 Single
Stores 12 mass fusion sleeves (144 fibers), base, deep cover, (1) 12 position sleeve holder, tie-wraps. 	LL-4848	911437-00-02	N/A	N/A	(2 trays max.) 288 Mass*	(8 trays max.) 1152 Mass	N/A	(10 trays max.) 1440 Mass
High Density. Stores 96 single fused fibers or 24 mass fusion sleeves (288 Fibers), base, cover, (16) six position sleeve holders, (6) four position mass sleeve holders, tie-wraps. 	LL-4896	911676-00-02	N/A	N/A	N/A	(4 trays max.) 384 Single or 576 Mass** (5 trays max.) 480 Single 720 Mass***	N/A	(9 trays max.) 864 Single or 2592 Mass**
Stores 60 single fused fibers, base, cover, (10) splice holders, tie-wraps. 	LL-7060	FA000042	N/A	N/A	N/A	(5 trays max.) 144 Single	N/A	(15 trays max.) 864 Single

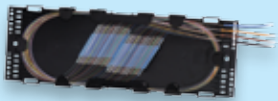
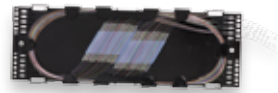

**NOTES:** \* Recommended no more than two trays in the LG-250 due to unique ribbon to ribbon application.  
 \*\* This tray designed for LG-350 and LG-350XL only. The LG-350 requires special tray support bracket (either 911975 Standard or 911974 High Capacity)  
 \*\*\* Five trays can be installed in the LG-350 but it requires a 911974 High Capacity Support Bracket to allow for stacking all trays and not interfering with the dome.

## LightLink™ Fiber Optic Splice Trays (cont.)


### Ordering Information – Splice Trays for LG-350 and LG-350XL-U Sealed Fiber Optic Splice Closures

DESCRIPTION	MODEL NO.	AFL NO.	LG-55-U	LG-150-U	LG-250-U	LG-350-U	LG-350-AC	LG-350XL-U
Stores 12 mass fusion sleeves (144 fibers), base, cover, mass splice holders, tie-wraps. 	LL-7144	FA000043	N/A	N/A	N/A	(2 trays max.) 432 Mass	N/A	(9 trays max.) 1296 Mass
Stores 60 single fused fibers or 12 mass fusion sleeves (144 fibers) or in combination, base, cover, splice holders, tie-wraps. 	LL-7644	FA000044	N/A	N/A	N/A	(5 trays max.) 144 Single (2 trays max.) 432 Mass	N/A	(15 trays max.) 864 Single (9 trays max.) 1296 Mass

### Ordering information – Splice Trays for Aerial Weathertight Fiber Optic Splice Closures

DESCRIPTION	MODEL NO.	AFL NO.	LG-410-U	LG-420-U	LG-500-U	LG-600-U
Single Fusion Splice Tray - Stores 24 single fused fibers, base, cover, (1) twenty-four position fusion splice holder, tie-wraps. 	LL-2400	91710-06	(3 trays max.) 96 Single	N/A	(3 trays max.) 72 Single	(12 trays max.) 288 Single
Universal Splice Tray - Stores 24 single fused fibers or 4 mass fusion sleeves (48 fibers), base, deep cover, tie-wraps. 	LL-2448	911289-00-02	(2 trays max.) 48 Single or 96 Mass	N/A	(2 trays max.) 48 Single or 96 Mass	(8 trays max.) 192 Single or 384 Mass
Mass Fusion Splice Tray - Stores 12 mass fusion sleeves (144 fibers) Base, deep cover, (1) 12 position mass sleeve holder, tie-wraps. 	LL-4848	911437-00-02	(2 trays max.) 288 Mass	N/A	(2 trays max.) 288 Mass	(8 trays max.) 1152 Mass

### Ordering Information – Splice Tray for Splicing Cabinets and Shelves

DESCRIPTION	MODEL NO.	AFL NO.
Telescoping Splice Tray - Stores up to 48 single fusion sleeves or 12 mass fusion sleeves (144 fibers). For use in the following products; LL-300, LL-288/576, LL-720/1440, OTSS-SYS1, OSS-SYS2 and OSS-SYS1. 	STF-48	911442-00-00

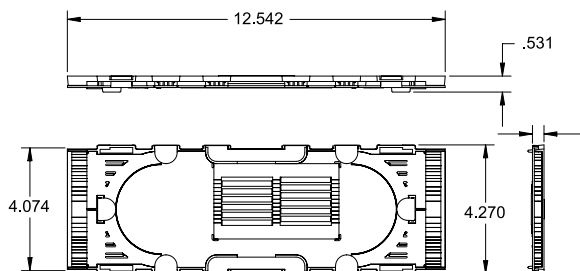
### LightLink™ Fiber Optic Splice Trays (cont.)

#### Ordering Information – Splice Tray Accessories

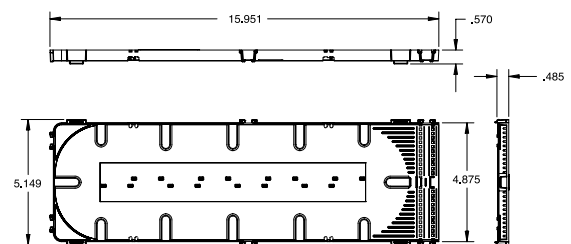
DESCRIPTION	MODEL NO.	AFL NO.
40 mm Fiber Protection Fusion Splice Sleeves, Telcordia® compliant (50 pcs. per bag)	FP-03(40)	S000206
60 mm Fiber Protection Fusion Splice Sleeves, Telcordia compliant (50 pcs. per bag)	FP-03	S000065
Core Tube Cable Fiber Router for routing fiber up to 8 directions. For all central core tube sizes.	1X8-CTR	911167-02
Loose Tube or Ribbon Router for routing fiber up to 6 directions. For all Loose Tube and up to 12 fiber Ribbon.	1X6-LRR	912085-00-00
FTTx Splice Tray Kit (2-4 SF splices)		DM000110

#### Dimensions

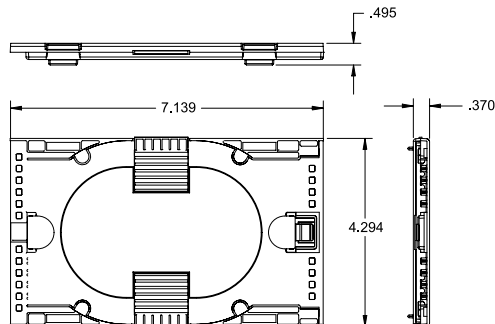
LL-2448 and LL-4848 Splice Trays



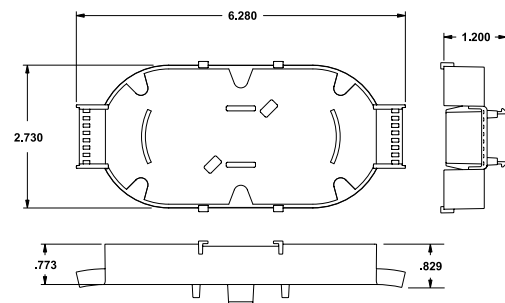
LL-4896 Splice Tray



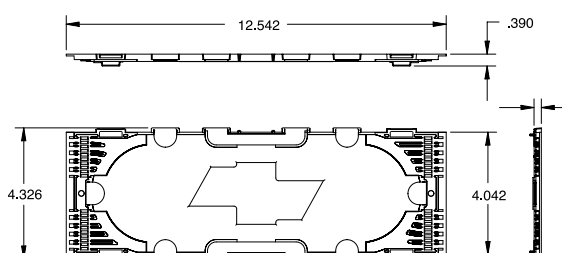
LL-1248, LL-2450 and LL-4850 Splice Trays



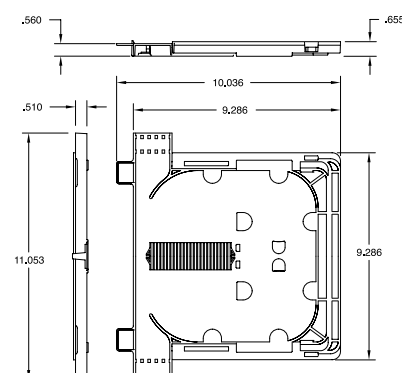
LL-2425 Splice Tray



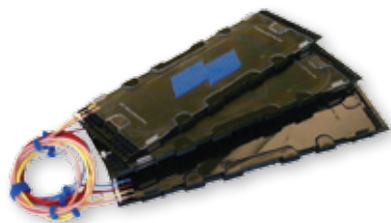
LL-2400 Splice Tray



OEE Splice Tray



Telcordia is a registered trademark of Telcordia Technologies, Inc.



### Features

- Tamper-Proof Packaging
- Fits in all AFL enclosures
- No additional trays required
- Color-coded transportation tubing
- Telcordia GR-1209 and 1221-CORE Compliant

## LightLink™ Splitter Trays

The LightLink Splitter Trays are a packaged system that include factory-preinstalled PLC splitters and splicing trays which easily fit within AFL's LG Series Closures, LL Series Wall Mount Cabinets and pedestals. These AFL splitter trays feature 1x4, 1x8, 1x16 or 1x32 planar technology with optical characteristics that include low insertion loss, high uniformity, and excellent environmental stability. The products are Telcordia® GR-1209 and GR-1221-CORE compliant ensuring longevity and durability in an Outside Plant application.

The splitter couplers are factory-preinstalled and secured within the AFL splice trays. The trays are tamper-proof to prevent unwanted entry. With the lengthy transition tubing preinstalled, the device fibers are routed into the splice trays (included as part of the package) to help complete installations in a timely manner. No additional trays are required reducing material costs.

### Optical Specifications

PARAMETER	VALUE			
	1 X 4	1 X 8	1 X 16	1 X 32
Wavelength Range	1260 - 1650 nm	1260 - 1650 nm	1260 - 1650 nm	1260 - 1650 nm
Max. Insertion Loss	7.5	10.7	14.0	17.4
Max. Uniformity	1.0	1.0	1.2	1.7
PDL (dB) Max.	0.3	0.3	0.3	0.3
Return Loss	50.0	50.0	50.0	50.0
Operating Temperature (°C)	-40 to 85	-40 to 85	-40 to 85	-40 to 85

*This tray has capacity for up to 24 single fusion splices and are stackable with each other and other similar AFL splice trays.*

### Ordering Information

DESCRIPTION	AFL NO.	SIZE
LightLink Splitter	FC000571	Tray PKG 1x4
LightLink Splitter	FC000539	Tray PKG 1x8
LightLink Splitter	FC000538	Tray PKG 1x16
LightLink Splitter	FC000537	Tray PKG 1x32



### Fiber Storage Units

AFL Fiber Storage Units (FSU) are used to conveniently and safely store an extra length of cable along the support strand for later use. Furnished as pairs (kit contains two Fiber Storage Units and two sets of hanger brackets), these FSU's are constructed from either aluminum with a baked acrylic enamel finish or dielectric polypropylene with a UV inhibitor. All basic hardware for attachment to the support strand is provided. Strand mount support brackets meet Telcordia® specifications. Galvanized strand clamping devices accommodate 1/4" to 7/16" strand and meet ASTM specifications A153 and B695.

#### Features

- Small profile and side facing channel minimizes ice and leaf loading
- Metal versions feature an all aluminum construction with welded cross members and baked acrylic enamel paint finish with chromate pre-finish per MIL-6-5541-B
- Plastic versions feature thermoplastic polypropylene resin with carbon black UV inhibitor
- Basic hanging hardware (bolts, nuts, washers) and strand clamps all included
- Tie-wrap slots for securing cable from sliding
- Galvanized strand clamps accommodate 1/4" to 7/16" strand

#### Specifications

PARAMETER	FSU-10	FSU-12	FSU-16	FSU-18	FSU-20	FSU-24
Nom. Channel Width in. (cm)	0.63 (1.60)	0.92 (2.34)	1.12 (2.84)	1.75 (4.45)	1.75 (4.45)	1.745 (4.5)
Min. Bend Diameter in. (cm)	10 (25.4)	12 (30.48)	16 (40.64)	18 (45.72)	20 (50.80)	24.125 (61.3)

PARAMETER	FOSP-12-TMK	FOSP-17-TMK
Nom. Channel Width in. (cm)	0.63 (1.59)	0.95 (2.41)
Min. Bend Diameter in. (cm)	12.13 (30.80)	17.5 (44.45)

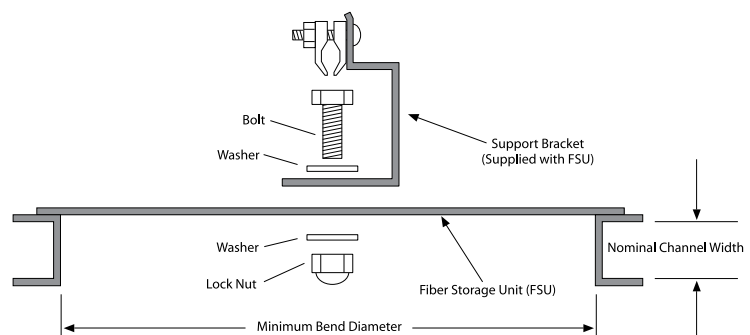
#### Ordering Information

DESCRIPTION	FSU-10	FSU-12	FSU-16	FSU-18	FSU-20	FSU-24
FSU Kit	911107-00	911108-00	911109-00	911110-00	911944-00-00	FA000095

DESCRIPTION	FOSP-12-TMK	FOSP-17-TMK
FOSP Kit (Dielectric)	FA000004	FA000002

Kits contain one pair of either FSU or FOSP and four mount brackets.

#### Hardware Diagram



Reserve Cable Storage

Butt Splice

In-Line Splice

Telcordia is a registered trademark of Telcordia Technologies, Inc.



### Fiber Storage Units for ADSS Fiber Optic Cable

AFL Fiber Storage Units (FSU) are used to conveniently store an extra length of cable along the ADSS cable run for later use. Furnished as pairs (kit contains two Fiber Storage Units and two sets of hanger brackets), these FSUs are constructed from UV stabilized PPE thermoplastic. All basic hardware for attachment to the ADSS cable is provided. ADSS cable mount support brackets meet Telcordia® specifications. Epoxy coated clamping devices meet ASTM specifications A153 and B695.

#### Features

- Small profile and side facing channel minimizes ice and leaf loading
- Constructed from UV stabilized PPE thermoplastic
- Basic hanging hardware (bolts, nuts, washers) and strand clamps all included
- Tie-wrap slots for securing cable
- Epoxy-coated strand clamps

The "TP" mounting bracket features an angled, tent-profile, epoxy-coated bracket for standard ADSS cable mounting.

#### Specifications

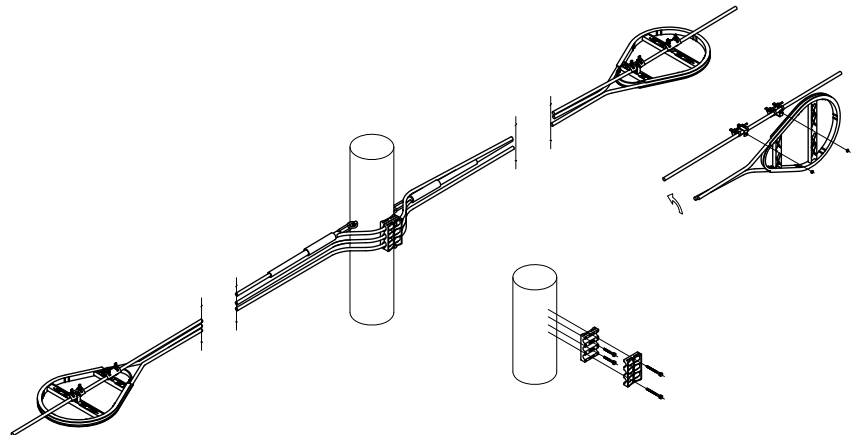
PARAMETER	FOSP-12-ADSS-TP	FOSP-17-ADSS-TP
Nominal Channel Width - in. (cm)	0.625	1.00
Minimum Bend Diameter - in. (cm)	12	17.5

#### Ordering Information

DESCRIPTION	FOSP-12-ADSS-TP	FOSP-17-ADSS-TP
FOSP ADSS Kit	FA000049	FA000050

Kits contain one pair of FOSP and two sets of hanger brackets.

#### Typical Installation Diagram





### Drop Cable Storage Unit (DCSU) for Fiber Optic Cable Drops

The AFL DCSU Fiber Storage Unit is designed to store and organize the slack from a fiber drop that is left at an FDT. The DCSU can also be used for the organization or storage of any unused multi-fiber drop in the placing of a multi-port terminal from VATS splices. In this way, cable left for future use is safely stored. The DCSU can manage up to 12 fiber drops when laid flat into the raceway, with minimal slack required at the terminal.

The AFL DCSU comes with all hardware required for mounting on aerial strand, pole or below-grade hand holes. Strand mount support brackets meet Telcordia® specifications. Galvanized strand clamping devices accommodate 1/4" to 7/16" strand and meet ASTM specifications A153 and B695. DCSUs are constructed from aluminum with a baked acrylic enamel finish.

#### Features

- Weather-resistant lightweight aluminum
- Keyed bracket mount prevents twisting
- Mounting hardware for aerial, pole or below-grade hand holes
- One tool, one bracket mounting
- Meets minimum bend radius requirements
- Flared ends prevent chaffing
- Allows length of reserve fiber to be adjusted
- Stackable if necessary using optional longer bolt
- Spring-type lockable fingers hold fiber drops and cable
- No tie-wraps required
- Patented design

#### Specifications

PARAMETER	DCSU-8
Nominal Channel Width in. (cm)	1.25 (3.18)
Minimum Bend Diameter in. (cm)	8 (20.32)

#### Ordering Information

DESCRIPTION	PART NO.
FOSP-DROP Kit (Pair)	FA000047

Kits contain one pair of DCSU and four mount brackets.





LL-400b shown with optional interconnect module



LL-400b in 1212 Pedestal



Hardware kit for external grounding (included)

## LightLink™ 400b Optical Splicing and Distribution Enclosure

The LightLink (LL) 400b Fiber Optic Splicing and Distribution Enclosure provides for organizing, splicing, and interconnecting fibers in FTTx, broadband, distribution, and building entrance applications. Each LL-400b enclosure features a scratch resistant powder coated aluminum base and a fully gasketed cover. A unique self-sizing grommet design allows for express and preterminated cable installation. The LL-400b is a butt-style enclosure equipped with 6 independent cable entry/exit grommets, used for outdoor pedestal or indoor building entrance and riser splicing applications. The unit supports a maximum storage and splicing capacity of up to 240 single or 432 mass-fused fibers.

When installed into an LL-400b, the Inteconnect Module supports the interconnection of up to 24 SC optical bulkheads. It is used in outdoor pedestals or building mounted LL-400b enclosures where interconnection is required.

### Features

- Independent cable strain relief system
- Cable entry/exit grommet seals
- Fiber routing system
- Splice tray support system
- Supports optional interconnect modules
- 240 single fusion splices
- 432 mass fusion splices
- Grounding hardware kit included
- UL® Listed

### Applications

- OSP Splicing
- MDU Splicing
- FTTx Distribution

### Specifications

PARAMETER	VALUE
Material	Chassis – aluminum
Coatings	Electrostatically applied, powder coat
Color	Antique white
Dimensions (H x W x D) in. (cm)	22.75 x 11.00 x 4.0 (57.79 x 27.94 x 10.16)
Weight lbs (kg)	6.5 (2.95)

### Ordering Information

DESCRIPTION	AFL NO.
LL-400b	91894-04
LL-400b In 1212 Pedestal	FM000636
LL-410 Interconnect Module, Enclosure with 4 SC Blank Adapter Panels	911410-00-04
LL-2448 Universal Splice Tray	911289-00-02
LL-2448-48S Single Fusion Splice Tray	FA000045
LL-2400 Single Fusion Splice Tray	91710-06
LL-400 Security Kit	FM000787
LL-400/LL-500 Dual-port Grommet Kit	FM002636
LL-400/LL-500 Multi-port Grommet Kit	FM001563
LL-400b Large Dual-port Grommet Kit	911406-00-00
LL-400b Large Multi-port Grommet Kit	FC000352



LL-400s



LL-400s in 1010 pedestal



Hardware kit for external grounding  
(included)

## LightLink™ 400s Optical Splicing and Distribution Enclosure

The LightLink (LL) 400s Fiber Optic Splicing and Distribution Enclosure provides for organizing, splicing, and interconnecting fibers in FTTx, broadband, distribution, and building entrance applications. Each LL-400s enclosure features a scratch resistant powder coated aluminum base and a fully gasketed cover. A unique self-sizing grommet design allows for express and preterminated cable installation. The LL-400s is a butt-style enclosure equipped with four independent cable entry/exit grommets, used for outdoor pedestal or indoor building entrance and riser splicing applications. The unit supports a maximum storage and splicing capacity of up to 72 single or 288 mass-fused fibers.

### Features

- Independent cable strain relief system
- Cable entry/exit grommet seals
- Removable Hinged Front Cover
- Fiber routing system
- Splice tray support system
- 72 single fusion splices
- 288 mass fusion splices
- Grounding hardware kit included
- UL® Listed

### Applications

- OSP Splicing
- MDU Splicing
- FTTx Distribution

### Specifications

PARAMETER	VALUE
Material	Chassis – aluminum
Coatings	Electrostatically applied, powder coat
Color	Antique white
Dimensions (H x W x D) in. (cm)	21.63 x 6.63 x 3.25 (54.94 x 16.84 x 8.26)
Weight lbs (kg)	4.74 (1.77)

### Ordering Information

DESCRIPTION	AFL NO.
LL-400s	FM000639
LL-400s with (2) multi-drop grommets	FM000618
LL-400s in 1010 Pedestal	FM000777
LL-400b Pedestal Spacer Mount Kit	911740-00-00
LL-4848 Mass Fusion Splice Tray	911437-00-02
LL-2448 Universal Splice Tray	911289-00-02
LL-2448-48S Single Fusion Splice Tray	FA000045
LL-2400 Single Fusion Splice Tray	91710-06
LL-400 Security Kit	FM000787
LL-400S Interconnect Module	FM000645
LL-400/LL-500 Dual-port Grommet Kit	FM002636
LL-400/LL-500 Multi-port Grommet Kit	FM001563



### LightLink™ 470 Fiber Optic Demarcation

The LightLink (LL) 470 Fiber Optic Demarcation unit is designed for the interconnection and demarcation of optical fibers between two separate network providers. The cabinet is a NEMA 3 rated enclosure constructed with weathertight gasketing and "free breathing" components for an indoor/outdoor pole or wall mounted application. Two unique fully secured individual compartments are designed to support up to 72 optical terminations and splices. Each compartment has two self-sizing grommets which allow for expressible 0.3-1.0" diameter cable. Designed to allow for accessing the providers network for testing, performance monitoring, and fault isolation. Each side houses up to three 24-fiber fusion splice trays (two LL-2448 Splice Trays are provided).



#### Features

- Durable and scratch resistant
- Powder coated antique white finish
- Cost-effective
- Pole or wall mounted
- Indoor or outdoor installation
- Removable independently locking doors

#### Specifications

PARAMETER	VALUE
Dimensions (H x W x D) in. (cm)	22 x 24 x 5 (55.88 x 60.96 x 12.7)
Weight lbs. (kg)	38 (16.57)

#### Ordering Information

DESCRIPTION	AFL NO.
LL-470 Pole Mount	911444-00-00
Adapter Panel with 6 SC/UPC	C215602
Adapter Panel with 6 SC/APC	C215638
SC/UPC Pigtail Kit, Includes: Loaded Adapter Panel, 6 Color-Coded, 3 Meter 900 $\mu$ m Pigtails	CS000755-0003
SC/APC Pigtail Kit, Includes: Loaded Adapter Panel, 6 Color-Coded, 3 Meter 900 $\mu$ m Pigtails	CS002735-0003



LL-500



LL-500 with LL-2450 installed

## LightLink™ 500 Optical Splicing and Distribution Enclosure

The LightLink (LL) 500 Optic Splicing and Distribution Enclosure provides for organizing, splicing, and interconnecting fibers in broadband, distribution, and building entrance applications. The enclosure features a scratch and corrosion resistant powder paint coating base and a fully gasketed hinged cover. A unique self-sizing grommet design allows for express and pre-terminated cable installation. The LL-500 supports up to five LL-2450 splice trays for up to 60 single fusion splices or three LL-4850 splice trays (not included in base unit) and an optional 12 fiber, hinged Interconnect Module.

### Features

- NEMA 3 rated enclosure
- Independent cable strain relief system
- Cable entry/exit grommet seals
- Fiber routing system
- Splice tray support system
- Hinged cover
- Supports optional Interconnect Modules
- Interconnect Module supports up to 12 SC bulkhead adapters
- Secured with a standard padlock
- 4 cable ports with standard grommets
- 8 cable ports with optional expansion kits

### Specifications

PARAMETER	VALUE
Material	Steel
Coatings	Electrostatically applied, powder coat
Color	Antique white
Dimensions (H x W x D) in. (cm)	17.5 x 9.0 x 4.0 (44.45 x 22.86 x 10.16)
Weight lbs. (kg)	6.5 (2.95)

### Ordering Information

DESCRIPTION	AFL NO.
LL-500-U-0	FM000326
LL-500 Interconnect Kit with SC UPC adapters	FM000385
LL-500 Interconnect Kit with SC APC adapters	FM000407
LL-500 Interconnect Kit without adapters	FM000408
LL-500 with Multi-port Grommets	FM000659
LL-2450 Single Fusion Splice Tray (stores 12 single fusion splices)	91957-00
LL-4850 Mass Fusion Splice Tray (stores 8 mass fusion sleeves - 96 fibers)	91958-00
Dual Cable Expansion Kit (includes dual grommet and hardware)	FM002636
LL-400/LL-500 Multi-port Grommet Kit	FM001563



## LightLink™ 580-AT Optical Splicing and Distribution Enclosure

The LightLink (LL) 580-AT Optic Splicing and Distribution Enclosure provides for organizing, splicing, and Interconnecting fibers in broadband, distribution, and building entrance applications. The enclosure features a scratch resistant powder coating base and a fully gasketed hinged cover. The cover was designed so that it may be installed on either side of the enclosure where there are space restrictions. The internal chassis and back-plate may be removed from the enclosure and brought to a splicing table to complete splicing, fiber routing and fiber management. The cable entry base has four interchangeable configurations to allow the installation of cable through a grommet system, or through pre-installed conduit couplings.

### Features

#### Enclosure:

- Tested to meet to Telcordia® GR-771
- NEMA 3 rated
- Independent cable strain-relief for flat drop cable and 2 mm / 3 mm drops
- Unique self-sealing grommet system
- Self-contained inner chassis frame with separate outer housing
- Dual telco can-wrench locking fasteners
- Hinged cover securable with standard padlock
- Internal, owner-accessible security screw

#### Interconnect Splice Tray Kit:

- Included: (1) Factory Pre-installed LL4808-R Ribbon Splice Tray with (2) ribbon fan-outs and SCUPC 900  $\mu$ m pigtailed for up to 24 connections. LCUPC Duplex adapters may be installed for up to 48 LC connections.
- The SCUPC adapter chambers are fitted with covers to allow up to 4 customers access for quick connect and disconnect and are ready for padlock security.
- Enclosure may be purchased with either SCUPC adapters and pigtailed pre-installed, or LCUPC Duplex adapters and pigtailed pre-installed.

### Specifications

PARAMETER	VALUE
Material – Housing	16 Gauge Aluminum
Coating	Electrostatically applied powder paint
Color	Beige
Size (H x W x D in.)	27.5" x 13.0" x 5.625" (total length: 33.5" L x 13")
Weight (lbs)	15.2
Capacity	(24) SC or (24) LC Duplex adapters and up to (2) LL4808 Splice Trays

### Ordering Information

DESCRIPTION	AFL NO.
LL-580-AT Enclosure with cable entry base (two 2" and two 1" NPT Fittings (Please select one of the two Interconnect Splice Tray Kits below to ready the enclosure for use.)	FM002653
Interconnect Splice Tray Kit with SCUPC Adapters and 900 $\mu$ m Pigtailed	FM002628-SC
Interconnect Splice Tray Kit with LCUPC Duplex Adapters and 900 $\mu$ m Pigtailed	FM002628-LC
Cable Grommet Bottom Plate (2-single cable and 2-multiport cable grommets)	FM001937
Cable NPT Bottom Plate (one 2" and four 1" fittings )	FM001959
Cable NPT Bottom Plate (two 2" fittings)	FM001964
LL4808-R (ribbon) Splice Tray	FA000020
LL4808-L (loose tube) Splice Tray	FA000021
LL500 Dual Cable Grommet Kit	FM002636

Telcordia is a registered trademark of Telcordia Technologies, Inc.



### LightLink™ 580-AT Optical Splicing and Distribution Enclosure



*Cable NPT Bottom Plate (two 2" fittings)*



*Cable NPT Bottom Plate (one 2" and four 1" fittings)*



*Cable Grommet Bottom Plate*



*LCI/UPC Interconnect Splice Tray Kit*



*SCI/UPC Interconnect Splice Tray Kit*



*LL-4808-R/L splice Trays*



*LL-500 Dual Grommet Kit*



## LightLink™ 24 Slim-Line Pedestal

The LightLink (LL) 24 Pedestal provides a low cost solution for splicing underground fiber cable, branches and drops. The pedestal may be buried up to the burying guide lines located on the pedestal base.

It is designed to allow for splicing single fusion fibers from 24 to 144 splices with use of LL-2448 or 288 MF by adding additional splice trays as required to meet maximum splice capacity. One side of the pedestal may be used for splicing optical fibers while the opposite side may be used for copper splicing of branch or drop cables.

### Features

- Easily installed in traditional buried pedestal applications
- All cable routing, retention, mounting and grounding accessories included
- One (1) LL-24 splice tray included with the pedestal for up to 24 splices
- Fiber routing rings allow for easy storage and maintenance of the buffer tubes and using tie-wraps, copper pairs may be secured to the mounting plate
- Defer deployment cost – open buffer tubes when access to fibers is required
- Standard 216-tool or similar tool required to remove the dome

### Applications

- FTTx Networks
- Local Area Networks
- Outside Plant Requirements

### Ordering Information

DESCRIPTION	AFL NO.
LL-24 Pedestal	FE000086
LL-2448-48S Single Fused Fiber Optic Splice Tray (48 sf)	FA000045
LL-2400 Single Fused Fiber Optic Splice Tray (24 sf)	91710-06
LL-4848 MASS Fusion Tray	911437-00-02
LL-24-FTTx Slim FTTx to Device Pedestal:	
with 1x4 Splitter	FE000206
with 1x8 Splitter	FE000207

### OptiNID™ 500 Optical Demarcation Closure

The OptiNID (OPN) 500 is an optical demarcation closure designed for use in either indoor or outdoor environments. Smaller to suit FTTH demarcation applications and versatile to suit Cat5 or coax connections, the closure is capable of housing up to six bulkhead adapters in one 118 LGX® compatible adapter plate. Equipped with an integrated splice tray, which holds up to six single fusion splices, the OPN-500 can be either wall or pole-mounted for ease of use and accessibility.

#### Features

- Weather-resistant thermoplastic alloy
- Self-latching, hinged cover design allows easy access without loose parts
- Self-sealing individual entrance ports prevent water and insects from entering
- Capacity for one 118 LGX compatible adapter plate
- Keystone adapter plate available
- Provider override for customer lock
- 1/2" or 3/4" NPT conduit fitting, compression cable fittings or grommeted entry ports
- Locations available on front cover for custom logos

#### Specifications

PARAMETER	VALUES
Dielectric Strength	Minimum 2500 Vrms for 1 minute
High Temperature Storage/Mold Stress °F (°C)	14 days at 159 (70.55)
Temperature Cycling with Humidity °F (°C)	150 day cycling from 40-140 (4.44-60) with 95% RH
Impact Test °F (°C)	-40 (-40), 5 ft/lbs on all external surfaces
Drop Test °F (°C)	-40 (-40), 5 ft onto concrete surface four times
Rain	24 hours at 10 psi
UV Resistance (Days Exposed)	60 per ASTM-G26-84
Salt Fog (Days Exposed)	60 per ASTM-BLL7-90
Flammability	UL94-5V
Chemical Resistance	30 Days at 100°F and 95% RH Resists chipping and/or cracking when subject to house paint, wasp spray, sulfuric acid, kerosene and sodium hydroxide
Material	UL® listed flame retardant thermoplastic alloy
Dimensions (H x W x D) in. (cm)	6.3 x 7.8 x 2.0 (15.7 x 19.7 x 5.0)
Cable Entrance - diameter	3 x 1/2" NPT (0.875")
Covers	Standard, molded-in snap finger and "F" termination

Keystone adapter plate shown with a variety of fiber and copper connector adapters

#### Ordering Information

DESCRIPTION	MODEL NO.	AFL NO.
OptiNID OPN-500 3/4" NPT, Plug, Heyco 3231, LGX 118 Black, 1 x SC/UPC Adapter	OPN-500	DM000550
OptiNID OPN-500 1/2" NPT, Plug, Grommet, LGX 118 Black, 1 x SC/APC Adapter	OPN-500	DM000614

### OptiNID™ 760XL Optical Demarcation Closure

The OptiNID (OPN) 760XL is an optical demarcation closure designed for use in either indoor or outdoor environments. It is capable of housing up to 24 bulkhead adapters in two 118 LGX® compatible adapter plates and comes equipped with a splice tray (LL-2425), which holds up to 24 single fusion splices. The OPN-760XL can be either wall or pole-mounted.

#### Features

- Capacity for up to two 118 LGX compatible adapter plates
- Weather-resistant thermoplastic alloy
- Self-latching, hinged cover design allows easy access without loose parts
- Self-sealing individual entrance ports prevent water and insects from entering
- Provider override is provided so that technician can override customer lock
- Location available on front cover for custom logos
- Security cover option available

#### Specifications

PARAMETER	VALUES
Dielectric Strength	Minimum 2500 Vrms for 1 minute
High Temperature Storage/Mold Stress °F (°C)	14 days at 159 (70.55)
Temperature Cycling with Humidity °F (°C)	150 day cycling from 40-140 (4.44-60) with 95% RH
Impact Test °F (°C)	-40 (-40), 5*/lbs on all external surfaces
Drop Test °F (°C)	-40 (-40), 5* (12.7 cm) onto concrete surface 4 times
Rain	24 hours at 10 psi
UV Resistance (Days Exposed)	60 per ASTM-G26-84
Salt Fog (Days Exposed)	60 per ASTM-BLL7-90
Flammability	UL94-5V
Chemical Resistance 30 Days at 100 °F and 95% RH Subject to:	Resists chipping and/or cracking when subject to: house paint, wasp spray, sulfuric acid, kerosene and sodium hydroxide
Material	UL® listed flame retardant thermoplastic alloy
Dimensions (H x W x D) in. (cm)	13 x 13 x 3.75 (32.5 x 32.5 x 9.5)
Cable Entrances in. (cm) diameter - Input	4 x 0.875 (2.2)
Covers	Standard – molded-in snap finger and 3/8" hex head fastener



OPN-760XL with optional security cover kit

LGX is a registered trademark of Furukawa Electric North America, Inc.

### OptiNID™ 760XL Optical Demarcation Closure



6-pack adapter plate



LL-2425 splice tray



#### Ordering Information

DESCRIPTION	MODEL NO.	AFL NO.
OptiNID OPN-760XL optioned for up to two 118 LGX® compatible adapter plates (includes splice tray, does not include adapters plates or adapters).	OPN-760XL	DM0001000
Security Cover Kit	OPN-760XL Security Cover	DM000923
LL-2425 Splice Tray	LL-2425	FC000247

#### Ordering Information – Adapter Plates

DESCRIPTION				LGX 118 - BLACK
Blank Filler Panel				C215507
<b>SINGLE-MODE (CERAMIC)</b>				
SCU	6-pack	simplex		C215611
SCA	6-pack	simplex		C215644
STU	6-pack	simplex		C215971
SCU	6-pack	duplex (12 fiber)		C220853
LCU	6-pack	duplex (12 fiber)		C215993
<b>MULTI MODE (BRONZE)</b>				
SC	6-pack	simplex		C215633
ST	6-pack	simplex		C215975
SC	6-pack	duplex (12 fiber)		C219598
LC	6-pack	duplex (12 fiber)		C216004

Adapter color: UPC = Blue Multimode = Beige APC = Green



### Features

- Capacity for up to two 118 LGX compatible adapter plates
- Weather-resistant thermoplastic alloy
- Self-latching, hinged cover design allows easy access without loose parts
- Self-sealing individual entrance ports prevent water and insects from entering
- Provider override is provided so that technician can override customer lock
- Locations available on front cover for custom logos



OPN-1224 shown with customer provided cabling, adapter plates and adapters.

## OptiNID™ 1224 Optical Demarcation Closure

The OptiNID-1224 is an optical demarcation closure designed for use in either indoor or outdoor environments. It is capable of housing up to 24 bulkhead adapters in two 118 LGX® compatible adapter plates and comes equipped with a splice tray (LL-2425), which holds up to 24 single fusion splices. The OPN-1224 can be either wall or pole-mounted.

### Specifications

PARAMETER	VALUES
Dielectric Strength	Minimum 2500 Vrms for 1 minute
High Temperature Storage/Mold Stress °F (°C)	14 days at 159 (70.55)
Temperature Cycling with Humidity °F (°C)	150 day cycling from 40-140 (4.44-60) with 95% RH
Impact Test °F (°C)	-40 (-40), 5*/lbs on all external surfaces
Drop Test °F (°C)	-40 (-40), 5* (12.7 cm) onto concrete surface 4 times
Rain	24 hours at 10 psi
UV Resistance (Days Exposed)	60 per ASTM-G26-84
Salt Fog (Days Exposed)	60 per ASTM-BLL7-90
Flammability	UL94-5V
Chemical Resistance 30 Days at 100 °F and 95% RH Subject to:	Resists chipping and/or cracking when subject to: house paint, wasp spray, sulfuric acid, kerosene and sodium hydroxide
Material	UL® listed flame retardant thermoplastic alloy
Dimensions (H x W x D) in. (cm)	12.25 x 12 x 5.25 (22.80 x 22.80 x 7.60)
Cable Entrances in. (cm) diameter - Output	5 x 0.625 (1.5)
Cable Entrances in. (cm) diameter - Input	2 x 0.75 (1.5), 1 x 0.250 (0.6) (ground wire)
Covers	Standard - molded-in snap finger and "F" termination

### Ordering Information

DESCRIPTION	MODEL NO.	AFL NO.
OptiNID-1224 optioned for up to two 118 LGX compatible adapter plates (includes splice tray, does not include adapters plates or adapters).	OPN-1224	DM000183

### Ordering Information – Adapter Plates

DESCRIPTION	LGX 118 - WHITE	LGX 118 - BLACK
Blank Filler Panel	C215503	C215507
<b>SINGLE-MODE (CERAMIC)</b>		
SCU 6-pack simplex	C215602	C215611
SCA 6-pack simplex	C215638	C215644
STU 6-pack simplex	C215962	C215971
STU 12-pack simplex	C223564	C223571
SCU 3-pack duplex (6 fiber)	C215512	C215521
SCU 6-pack duplex (12 fiber)	C219604	C220853
LCU 6-pack duplex (12 fiber)	C215989	C215993
<b>MULTI MODE (METAL)</b>		
SC 6-pack simplex	C215626	C215633
ST 6-pack simplex	C215968	C215975
ST 12-pack simplex	C223567	C223576
SC 3-pack duplex (6 fiber)	C215536	C215543
SC 6-pack duplex (12 fiber)	C220435	C219598
LC 6-pack duplex (12 fiber)	C215998	C216004
MTRJ 6-pack	C216079	C216083





### FPB-201 Fiber Demarcation Box

AFL has designed a cost-effective solution for protecting the passive demarcation of premise fibers. The FPB-201 is injection molded with an integral fiber retention system allowing for quick installation and a positive lock strain relief for most premise fiber cable. This device allows for the indoor and protected outdoors interconnect of up to 2 standard SC adapters in a protected white plastic enclosure to blend in most premise environments.

#### Features and Benefits

- Compact size takes up less wall space for installation
- Thin profile prevents accidental damage in congested installations
- Molded inner slack storage area insures minimum bend radius preventing micro bends and unnecessary loss or fiber damage
- No additional tie-wraps or clamps needed due to integral positive lock strain relief
- Inner tray retains up to two fusion or mechanical splice sleeves
- Accepts standard SC connectors SCA or SCU
- Protects fiber connection from accidental contamination or movement allowing long term preservation of connection in hostile environments
- Cost-effective, passive solution protects each connection without driving project over budget
- Key-hole, three screw mounting allows two of three screws to be leveled and pre-installed
- Two locations available for splice and connector to reside allows flexible installation and up to two splices if needed
- Removable sliding cover for easy access to complete box in congested locations

#### Specifications

PARAMETER	VALUE
Dimensions (mm)	7.9" x 4.5"W x 1.2"D (200 x 115 x 30)
Weight (g)	7 oz (200)
Cable count	2 max.
Cable Types	Most premise (floor) cables
Connection Type	Fusion splice, mechanical splice or SC connector

#### Ordering Information

DESCRIPTION	MODEL NO.	AFL NO.
Injection molded fiber demarcation box for up to 2 fibers	FPB-201	DM000108



### Loose Tube & Riser Rated Indoor/Outdoor Loose Tube Cable Assemblies

High-fiber count, Loose Tube & Riser Rated Indoor/Outdoor Loose Tube Cable assemblies provide a safe and proven method of utilizing preterminated connector technology for outside plant applications. These assemblies help control cost by eliminating labor-intensive field termination and provide the same factory terminated reliability the industry has trusted for many years. Cable assemblies are available in Indoor/Outdoor Loose Tube, suitable for use in both indoor and outdoor applications. Each unit is manufactured to exceed all TIA and Telecordia requirements.

#### Applications

- Outdoor Cabinets
- External-Building Runs
- Vaults
- CEVs

#### Features

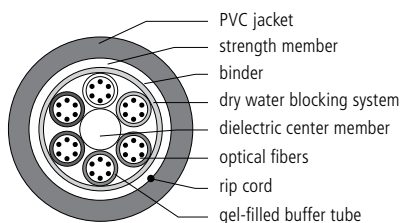
- Fiber counts from 6 to 144 fibers
- Available with ST, SC, FC, and LC connectors single-mode
- Pigtail assemblies, standard configuration (nonstandard configurations available)
- ST, SC, FC and LC connectors available in both single-mode and multimode
- Pre-installed pulling eye kits available
- 1 meter standard breakout length
- 2.4 mm standard furcation for SC, FC, and ST
- 1.6 mm standard furcation for LC
- UV resistant outer jacket
- Gel-filled loose buffer tubes (RL), Gel-filled Loose Tube (LT)
- Meets Telcordia® GR-20-CORE

#### Specifications

##### Riser Rated Indoor/Outdoor Loose Tube

Riser Rated stranded design loose tube cable is moisture and U.V. resistant, S-Z stranded for easy mid-span access, UL® Listed type OFNR (UL1666) riser-rated, and can be used in both duct and lashed applications.

##### Cable Components



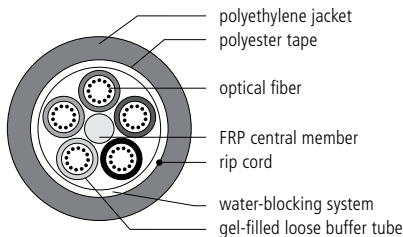
##### Temperature Range

PARAMETER	VALUE
Operating	-40°C to +70°C
Storage	-40°C to +75°C
Installation	0°C to +70°C

##### Loose Tube

Loose Tube stranded design cables feature fiber counts up to 432, compliance with EIA/TIA and REA/RUS PE-90, and are S-Z stranded for easy mid-span access.

##### Cable Components



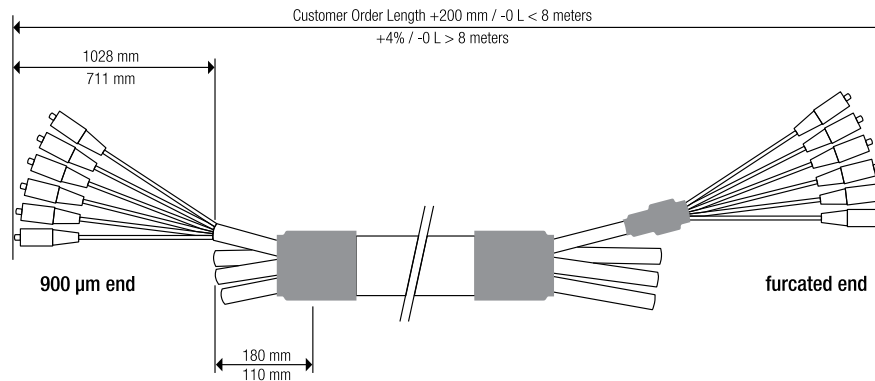
##### Temperature Range

PARAMETER	VALUE
Operating	-40°C to +70°C
Storage	-40°C to +75°C
Installation	-30°C to +70°C

Telcordia is a registered trademark of Telcordia Technologies, Inc.

### Loose Tube & Riser Rated Indoor/Outdoor Loose Tube Cable Assemblies

#### Dimensions



#### Ordering Information

ASC	ASC	LT	024	Q	0010	NN
Connector End A	Connector End B	Cable Type	Fiber Count	Fiber Type	Cable Length (meters)	Leg Diameter
<b>Single-mode</b> ASC = Angle SC AFC = Angle FC USC = Ultra SC UFC = Ultra FC UST = Ultra ST ULC = Ultra LC	<b>Single-mode</b> ASC = Angle SC AFC = Angle FC USC = Ultra SC UFC = Ultra FC UST = Ultra ST ULC = Ultra LC XXX = No connector	LT = Loose Tube RL = Riser Rated Indoor/ Outdoor Loose Tube	006 = 6 012 = 12 024 = 24 036 = 36 048 = 48 072 = 72 096 = 96 144 = 144	Q = Single-mode	XXXX (specify length) 0010 = 10 meters	<b>Leg Diameter</b> N = 900 µm End A / XXX End B NN = 900 µm End A and B F = Furcated End A / XXX End B FF = Furcated Ends A and B FN = Furcated Ends A / 900 µm End B NF = 900 µm End A / Furcated Ends B

#### Lengths Available

Cable lengths are dependent on fiber cable type and count.  
Consult customer service for maximum lengths available.



## Node Cable Assemblies

AFL's Node Cable Assemblies are factory tested to meet stringent installation performance demands. These assemblies make splicing from an optical node to a closure fast, easy and reliable. This connection is critical to the installation and requires an environmental seal between the cable and the node housing. AFL's assembly comes with node fitting pre-installed on the cable, featuring an anti-twist design enabling easy mounting without twisting the cable. The mounting thread is an industry standard size of 5/8-24 UNEF.

AFL's Node assemblies feature loose-tube outdoor cable with a water-blocked cable design. An assortment of industry standard connector styles are available such as SC/APC, SC/UPC, FC/APC, FC/UPC, LC/UPC, and MPO. Standard or custom breakout lengths are available with standard fiber counts of 1 thru 12 terminations (>12 fibers also available), with all fibers color coded for quick/easy fiber identification.

### Features

- Field proven, durable, connecting hardware
- High-quality optical terminations meet all geometric and optical performance requirements
- Ordering flexibility; available in standard and custom lengths and connector counts
- Mini-central core type cable ≤12 fibers; stranded cable >12 fibers
- Installed hard-line entry connector with anti-twist design
- Individualized serial numbers for easy identification
- SC/UPC, FC/UPC, SC/APC, FC/APC, LC/UPC, and MPO
- Rugged polyurethane riser-rated indoor/outdoor loose tube single-mode uniflex cable; armored polyethylene jacket or heavy duty polyurethane uniflex
- 900 µm or 2.0 mm / 3.0 mm upjacketed color-coded furcation, breakout length 1 meter

### Specifications

PARAMETER	VALUE
Operating Temperature °F (°C)	-40 to 158 (-40 to 70)
Storage Temperature °F (°C)	-58 to 158 (-50 to 70)
Crush Resistance lbs (kg)	1000 (453.5 kg)
Impact Resistance	25 lbs @ 2.2 lbs per foot (11.25 kg @ 0.99 kg)
Flexing	25 lbs @ 5 in. (11.25 kg @ 12.7 kg)
Fiber Core Diameter (microns)	8.3
Maximum Insertion Loss (dB)	0.25 (UPC), 0.35 (APC), 0.5 (MPO)
UPC Return Loss (dB)	-55
APC Return Loss (dB)	-65
Outer Jacket Material	Riser-rated PU / PE
Finish	Aluminium, Anodized
Cable Pullout Tensile Strength lbs (kg)	247 (112.04)
Entry Threads in.	0.625 x 24
Dimensions in. (cm)	4.25 long x 0.875 diameter (10.8 x 2.22)

### COLOR FURCATION - FIBER NUMBER REFERENCE

1	Blue	4	Brown	7	Red	10	Violet
2	Orange	5	Slate	8	Black	11	Rose
3	Green	6	White	9	Yellow	12	Aqua

### GROMMET SPECIFICATIONS - STANDARD D

Inner Diameter	0.375"
Active Pull Test	35 lbs
Overall length	45 mm
Hex Nut Size	7/8"
Length from Hex Nut to end of front body	6 mm
Material	Aluminum, Anodized

### Ordering Information

ASC	XXX	NC	012	Q	0010	N
<b>Connector End A</b>	<b>Connector End B</b>	<b>Cable Type</b>	<b>Fiber Count</b>	<b>Fiber Type</b>	<b>Cable Length (meters)</b>	<b>Leg Diameter</b>
<b>Single-mode</b> ASC = Angle SC AFC = Angle FC USC = Ultra SC UFC = Ultra FC UST = Ultra ST ULC = Ultra LC MPO = Angle MPO	<b>Single-mode</b> XXX = No connector	NC = Uni-Flex AN = Armored PE HD = Heavy Duty Uniflex	002 = 2 004 = 4 006 = 6 008 = 8 010 = 10 012 = 12 (Higher fiber counts available upon request)	Q = Single-mode	XXXX (specify length) 0010 = 10 meters	N = 900 µm End A F = 2.0 mm Furcated End A M = 3.0 mm Furcated End A



